



webEdition
manage your content

Voting Module



Voting Module

User Guide

Standard 4.1.1
October 2006

© 2006 living-e AG
All rights reserved.

Printed in Germany

living-e AG does not extend any guarantee or warranty concerning the accuracy and correctness of any information contained in this manual. This manual may not be reproduced by any means, either electronically or mechanically, photocopied, recorded, reproduced or transferred by information storage or information retrieval systems by the purchaser, for purposes other than private use without the express written consent by living-e AG. The purchaser is authorized to make one backup copy of the software. A copy of this software can be requested from living-e AG at any time or it can be downloaded at www.living-e.de. Neither living-e AG nor suppliers of living-e AG shall be held liable for any damage (this shall include, without restriction, any damage arising from lost profits, operation breakdowns, loss of business information or data or any other financial losses), which arise from the use of this product or from the inability to use this product, even in the event that living-e AG has been informed of the possibility of such damage. In any case of damage, liability of living-e AG shall be limited to the amount you have actually paid for the product.

Microsoft Windows and Explorer are trademarks of Microsoft Corporation. Macintosh and Apple are trademarks of Apple Computer Inc. UNIX is a trademark of UNIX System Laboratories. All other trademarks are the property of their respective owners.

Contents

About this document 11

1 Voting Module: Introduction 15

- What is the Voting Module? 15
- Installation 15
- General information and tips on navigation 15
- Start Module 16
 - Voting Module Explorer menu 16
- The menus 17
 - The Voting dropdown menu 17
 - Help-dropdown menu 17
- Voting Module views 17
 - The Properties view 17
 - The Inquiry view 19
 - The Result view 19

2 Using the Voting Module 21

- Create a new Vote 21
- Vote groups 23
- Vote result 23

3 Practical examples for the template design 29

- Creating a template for a Vote 29
- Displaying the Vote result 30
- Summary page for multiple Votes 32

Index 35

List of figures

Modules Dropdown Menu	16
Voting Module: Quickstart Screen	16
Voting module explorer menu	17
Voting dropdown menu	17
Help dropdown menu	17
Properties view	18
Inquiry view	19
The Result view	20
Voting Properties	21
Revote Control	22
The Validity area	22
Inquiry view	22
Voting group	23
New Group in explorer menu	23
Result view - Inquiry area	24
Result view - Export area	24
Select file format for the Export	25
Download CSV file	25
Save CSV file	25
Setting filename	26
CSV-Import in Open Office	26
Voting data in Open Office	27
Simple Voting	30
Voting Result	32
Voting summary	33

List of procedures

Procedure 1 Define a new vote 21

Procedure 2 Creating a Vote group 23

Procedure 3 Display result 24

Procedure 4 Export the results into a spreadsheet 24

About this document

Purpose of this document

This document treats the webEdition.Voting Module and how to use it.

You can use this manual to learn:

- what the Voting Module is
- how to install the module
- how to use this module to create votes
- how to create voting groups

Audience

This document is intended for personnel in the following groups:

- Web administrators
- Web editors

The webEdition customer documentation suite

The documentation team publishes new webEdition documents to support the release of all webEdition features, modules and enhancements.

You can consult our documentation suite for detailed information about the modules you have purchased or about webEdition products that you may wish to purchase in the future. All customer documentation is available in portable document format (PDF) on the webEdition documentation Web page.

On-line reference documentation

The webEdition customer documentation suite comprises the following books, all of which you can obtain at URL: <http://www.living-e.de/>

Standard webEdition documentation

The following books support the webEdition Standard suite:

- *The webEdition User Guide*
- *The webEdition Installation Guide*
- *The webEdition Tag Reference*

Documentation for webEdition modules

The following books support the webEdition modules:

- *The Customer Management and Customer Management PRO Module User Guide*
- *The Database/Object Module User Guide*
- *The Editor-PlugIn User Guide*
- *The Newsletter and Newsletter PRO Module User Guide*
- *The Scheduler and Scheduler PRO Module User Guide*
- *The Shop Module User Guide*
- *The Task/Messaging Module User Guide*
- *The User Management and User Management PRO Module User Guide*
- *The Workflow Module User Guide*
- *The Export Module User Guide*
- *The Voting Module User Guide*

What precautionary messages mean

webEdition documents include attention and caution messages, which are designed to draw your attention to important instructions.

Attention boxes

An attention box identifies information that is necessary for the proper performance of a specified task. For example:

ATTENTION

You must have the appropriate permissions in your user profile to complete this procedure. Permissions are assigned to you by your webEdition system administrator. Contact your webEdition system administrator for further details.

Caution boxes

Caution messages indicate that there are possible risks to your software or database if you perform a specified task without taking the suggested appropriate precautions. For example:



CAUTION

Database warning

If you complete this procedure, your database will be overwritten.

How commands, system responses and we:tags are represented

The commands, system responses and webEdition tags (called we:tags) used in this document conform to the following conventions.

Web interface commands

Commands performed through a Web browser are shown in *italic* typeface. For example:

Click on the *Save* button.

Menu-based commands performed in a Web browser are shown in *italic* typeface. Drop-down or nested menu commands are separated by an input prompt (>). For example:

Select *Customers > New* from the main menu of the Customer Management Module.

webEdition tags and template code

The webEdition templates use a specialized set of programming tags based on the PHP programming language. These webEdition tags or `we:tags` are displayed in `courier` typeface and in angled brackets:

Opening tags appear thus: `<we:tag/>`

Closing tags appear thus: `</we:tag>`

The programming code used in webEdition templates is also represented in this document by `courier` typeface:

```
<we:sessionStart/>
<we:ifRegisteredUser>
Hello: <we:sessionField Last name="user name" type="print"/><br>
Logged in
</we:ifRegisteredUser>
```

Attribute variables

Attributes and variables appear in *courier italic* typeface. For example:

```
<we:hidden name="attribute1">
```

How to check the document version and issue

The information on the title page of this document indicates the version and issue for this publication. The version and issue also appear in the footer on every even-numbered page.

The first two digits in the document numbering scheme indicate the version. The version number increases each time the document is updated to support a new software release. For example, the first release of a document is 01.01. In the next software release cycle, the first release of the same document is 02.01.

The second two digits in the document numbering scheme indicate the issue. The issue number increases each time the document is revised and re-released in the same software release cycle. For example, the second release of a document in the same software release cycle is 01.02.

Customer service

For further information about webEdition, please consult our Web page, or contact our customer service department:

- Web Page: <http://www.webedition.biz/>
- E-mail:
 - Technical support: technik@living-e.de
 - Sales: sales@living-e.de
 - Information/Help: info@living-e.de

1 Voting Module: Introduction

This chapter is intended to help you familiarize with the webEdition Voting Module and its features. This chapter treats what the module does and how to install it. You can also find information here about the basic layout and command features for the Voting Module. These topics are treated in the following sections:

- Section 1.1, "What is the Voting Module?" on page 15
- Section 1.2, "Installation" on page 15.
- Section 1.3, "General information and tips on navigation" on page 15.

1.1 What is the Voting Module?

With the webEdition Voting Module, you can easily create and maintain votings on your webEdition site. The installation and handling of the Voting Module corresponds to the webEdition Look&Feel; you therefore do not have to perform complicated configurations to offer this additional service to your visitors. The analysis of the votings is embedded seamlessly in the webEdition design philosophy and can get you and your customers informative insights about your web site visitors. The Votings are administered layout-neutrally in the webEdition GUI and are integrated with voting specific we:tags seamlessly into your page.

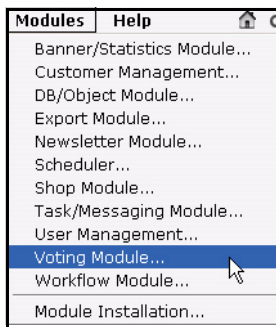
The Voting Module particularly appeals to users who want to generate day-actual information for themselves and their visitors from a webEdition web site.

1.2 Installation

The installation procedure for all modules is described in *The webEdition Installation, Update and Backup Procedures*. A .pdf version of this guide is available at the following URL: <http://living-e.de>

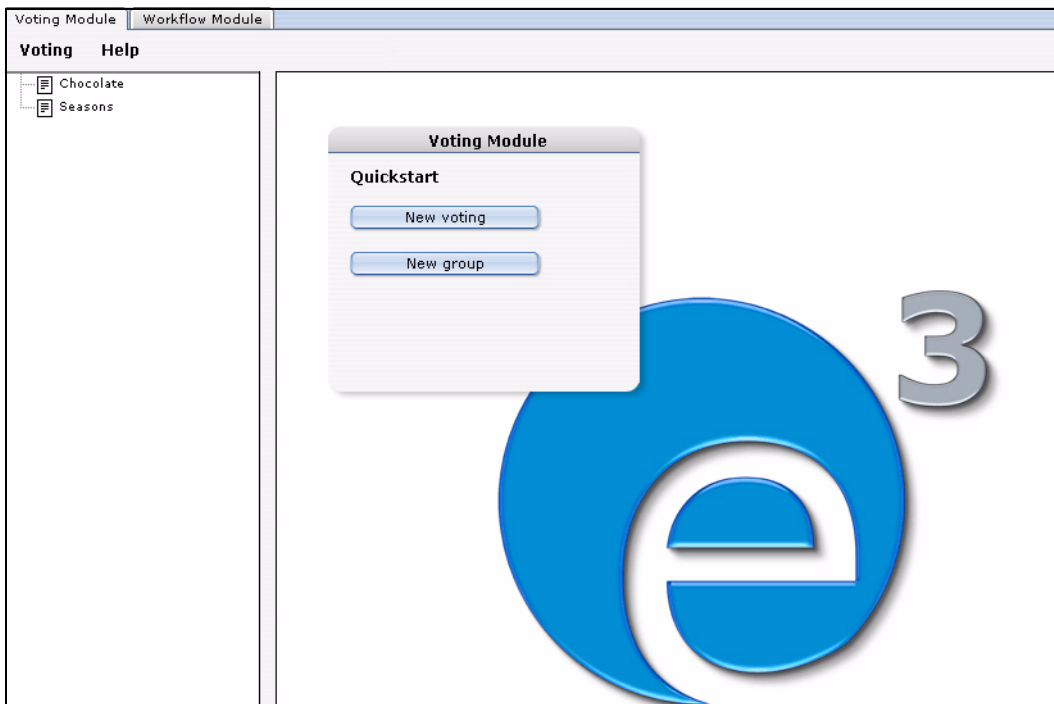
1.3 General information and tips on navigation

After the installation, a new menu item appears in the webEdition *Modules* menu. See Figure 1, "Modules Dropdown Menu" on page 16.

Figure 1 Modules Dropdown Menu

1.4 Start Module

To open the Voting Module, click on *Voting Module...* from the *Modules* Dropdownmenu on the webEdition mainscreen. The Quickstart screen will appear, as shown in Figure 2.

Figure 2 Voting Module: Quickstart Screen

In the *Quickstart* screen, you can directly create a new voting or a group.

1.4.1 Voting Module Explorer menu

The explorer menu on the left hand of the screen shows a list of your votings and groups (see Figure 3).

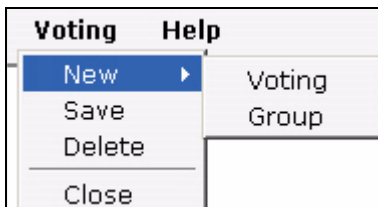
Figure 3 Voting module explorer menu

1.5 The menus

Click *Modules > Voting Module* to access the module window(see Figure 2). Here you can find the *Voting* and the *Help* menu.

1.5.1 The *Voting* dropdown menu

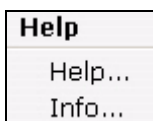
In the dropdownmenu *Voting*, the following items are located (see Figure 4).

Figure 4 *Voting* dropdown menu

- *New (Voting/Group)* Click *New >Voting / Group* to define a new Voting resp. a new group.
- *Save* Click *Save* to permanently save your voting or group.
- *Delete* Deletes the currently selected voting or group.
- *Quit* Leave the module window and return to the webEdition main screen.

1.5.2 *Help*-dropdown menu

In the *Help*-dropdownmenu you will find the following items (see Figure 5).

**Figure 5 *Help* dropdown menu**

- *Help*. This item provides Help screens.
- *Info*. This item provides information about the application.

1.6 Voting Module views

The webEdition Voting Module consists of the following views, which can be accessed via the respective Tabs: *Properties*, *Inquiry* and *Result*.

1.6.1 The *Properties* view

The basic settings for your voting are defined in the *properties* view.

Select *Voting > New* from the Voting menu to access the *Properties* view(see Figure 6):

Figure 6 *Properties* view

The *Properties* view consists of the areas *Properties*, *Revote control* and *Validity*.

- *Properties*: Give your Voting an unequivocal name. You can also add your voting to an existing *group* which you can select by clicking on *Select*. The *Create Date* dropdown menu serves to be able to enter by hand a data which can be read out and be used as a sort criteria; it does not schedule time-controlled publication! For this purpose, you would have to use the webEdition Scheduler Module (PRO). To quit a Voting time controlled, please use the function *Validity*. The check box *Limit access* appears only if the *User management (PRO)* is installed. Activate this check box and select user(s) who may access the Voting to limit the access.
- *Revote control*: Here you can determine, whether, and if so in which intervals, users can vote for the Voting once more. Select your preferential method with the radiobuttons *By Cookie* or *By IP* and determine with the Dropdownmenu a least interval to a possible new voting. You find explanations to both methods in the info box above the radiobuttons which you can enlarge by clicking the triangle.

<p>ATTENTION</p> <p>Please note, that the method <i>By Cookie</i> requires the <code><we:writeVoting/></code> tag to be in the very first line of the template where it is used!</p>

- *Validity*: The check box *Active till* must be activated, so that the voting on your site is saved and is "parked" at the end of the validity. Determine with the dropdownmenus the data and time to which the voting should run. No more votes are accepted from this time. You can, of course, switch the voting state at any time.

1.6.2 The *Inquiry* view

This view consists of the area *Inquiry Data* (see Figure 7).

Figure 7 *Inquiry* view

In this area the following elements are located:

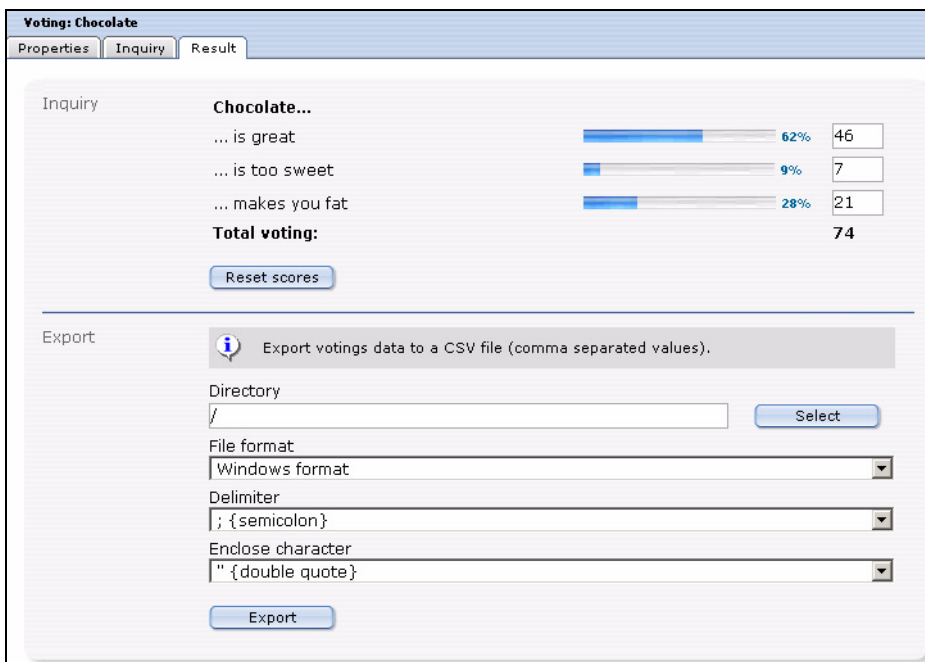
- *Version* dropdownmenu: You can define different versions of your voting. This makes sense, for example, with different language versions. Then the results of the different languages are evaluated together and displayed in one result overview.
- *Question*: Enter here the text of your question, as it should be displayed on your page. If you are planning to use multiple *Versions*, select the correct *Version* from the dropdownmenu and enter the question.
- *Answers*: Enter the possible answers in the text fields. Click on the + symbol to add answer textfields.

Note: At least two possible answers have to be given.

1.6.3 The *Result* view

This view consist of the areas *Inquiry* and *Export*. In the *Inquiry* area, the actual result of the voting is displayed. The result consists of the answers of all (language-) versions of the voting. Click on *Reset Scores* to set the voting to zero. The result is displayed in absolute numbers as well as in per cent. The bar chart makes it easy to rate the result.

Figure 8 The *Result* view



In the *Export* area, you can export your voting results as a CSV file. For the exact procedure, please see procedure 4.

2 Using the Voting Module

In this chapter the following topics are treated:

- Section 2.1, "Create a new Vote" on page 21
- Section 2.2, "Vote groups" on page 23
- Section 2.3, "Vote result" on page 23

2.1 Create a new Vote

Votings in the webEdition Voting Module are created very easy in the module window. Click *Voting > New > Voting* or *New Voting* in the Quickstart, to create a new voting.

Procedure 1 Define a new vote

In the Voting Module main screen

- 1 Select a name for your voting. Enter it in the corresponding field in the *Properties* area
- 2 Press the *Select* Button to assign the voting to an existing group
- 3 Specify now the *Create Date* by using the dropdown menu. Please note, that this concerns the date published; this is **not** a function for scheduled publishing of the Votings. For that task, please use the webEdition Scheduler (PRO) Module. You can, nonetheless, determine the validity of the voting in the *Validity* area, which is treated further below.

Figure 9 Voting Properties

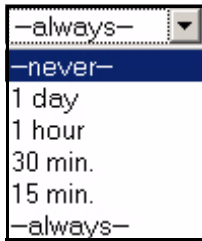
The screenshot shows a 'Properties' dialog box for a voting. It includes the following fields and controls:

- Name:** A text input field containing 'Chocolate'.
- Group:** A text input field containing '/', with a 'Select' button to its right.
- Create Date:** A date selection interface with dropdown menus for the day (07, 09), month (06, 01), and year (2005).
- Limit access:** A checked checkbox.
- Allow access for following users:** A list box containing the entry '/admin' with a trash icon to its right.
- Add:** A button at the bottom right of the dialog.

- 4 You can limit the access to the voting to certain users by using the *Limit access* button. You are then able to add users by using the *Add* Button.

Note: This function is only available if the webEdition *User Management (PRO)* is installed

Figure 10 Revote Control



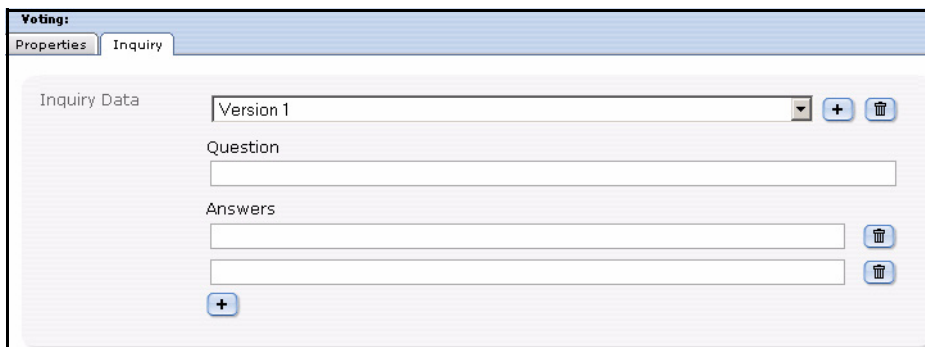
- 5 In the *Revote Control* area, you can determine whether, and in which intervals users may vote once more in a Voting. The setting *never* in the dropdown menu means, that the user only may vote once, while the setting *always*, that he can vote as often as he wants to. In addition, there are the settings *1 day*, *1 hour*, *30 minutes* and *15 minutes*.
- 6 With the radiobuttons *By Cookie* and *By IP* you can determine, how the interval should be checked. The default setting is *By Cookie*. In this setting, a Cookie is set for the user, which enables the Voting Module to identify the user. The advantage of this method is that also Votes of different users from a company net which presents itself outwardly with only one IP can be evaluated. Also it prevents in this way that, if an user gets assigned a new IP, e.g., by a new dialing with his provider and thereby could vote anew. The disadvantage consists in the fact that some users could have deactivated cookies in their browsers. You can handle this threat by activating *By IP*, then have to count, however, on abovementioned disadvantages.

Figure 11 The Validity area



- 7 Enter now the *Validity* of your voting and set it to *Active*. When the validity has ended, no more votes will be counted.
- 8 Click now on the *Inquiry* tab to enter your question and answers
The Inquiry view is opened

Figure 12 Inquiry view



- 9 Enter your voting's question in the *Question* field
- 10 Enter the possible *Answers*; by clicking the "+" button, you can add additional answers.

Note: There have to be at least two possible answers

- 11 If you plan to create multiple versions of the question, e.g. to offer different language versions on your site, select Version 2, Version 3 ... from the dropdown menu , and enter the respective questions and answers.

Note: Pay attention please to the fact that with different (Linguistic) versions the single responses of the versions correspond correctly, because the result would be otherwise falsified!

- 12 Click now on the *Save* button
- 13 You have successfully created your voting

2.2 Vote groups

Vote groups serve the organization of your votings. Thus they can be organized thematically coherent in groups and be evaluated better or be displayed sorted on your page.

Procedure 2 Creating a Vote group

In the Voting Module window

- 1 Select *Voting > New > Group* from the voting menu or *New Group* from the Quickstart
The Votinggroup window opens

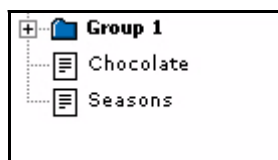
Figure 13 Voting group

The screenshot shows a dialog box titled 'Group: Properties'. It has a 'Name' text input field containing 'Group 1'. Below it is a 'Group' dropdown menu showing a slash '/' and a 'Select' button. At the bottom, there is a checkbox labeled 'Limit access' which is currently unchecked.

- 2 Enter a name for the new group.
- 3 Click the *Select* button to create the new group as a sub group of an existing one.
- 4 If the *User Management (PRO)* is installed, you can *Limit access* for certain users.
- 5 Click the *Save* Button

The system confirms the storage process. The newly created group is now displayed in the explorer menu to the left (see Figure 14)

Figure 14 New Group in explorer menu



- 6 The new group is created and you can now assign your votings to this group.

2.3 Vote result

Now it is time to look at the results of your votings.

Procedure 3 Display result

In the Voting Module window

- 1 Select the desired voting from the explorer menu to the left
- 2 Click on the *Result* tab
The result view opens

Figure 15 Result view - Inquiry area



- 3 Click on the *Reset Scores* button to set the result to zero again. You may also alter the results manually and save them by clicking *Save*.

To be better able to evaluate the result of your votings also graphically, an export function for your data in the common CSV (Comma separated value) format is integrated in the webEdition Voting Module. As an example we will perform an export into a spreadsheet, here OpenOffice.

Procedure 4 Export the results into a spreadsheet

In the Voting Module

- 1 Select the desired voting from the explorer menu to the left.
- 2 Click on the *Result* tab
The result view opens

Figure 16 Result view - Export area

Export

Export votings data to a CSV file (comma separated values).

Directory: /

File format: Windows format

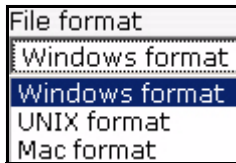
Delimiter: ; {semicolon}

Enclose character: " {double quote}

3 Now set your preferences:

- Click the *Select* button, to choose a directory for the export. Per default the export will be saved in the root directory (/)

Figure 17 Select file format for the Export

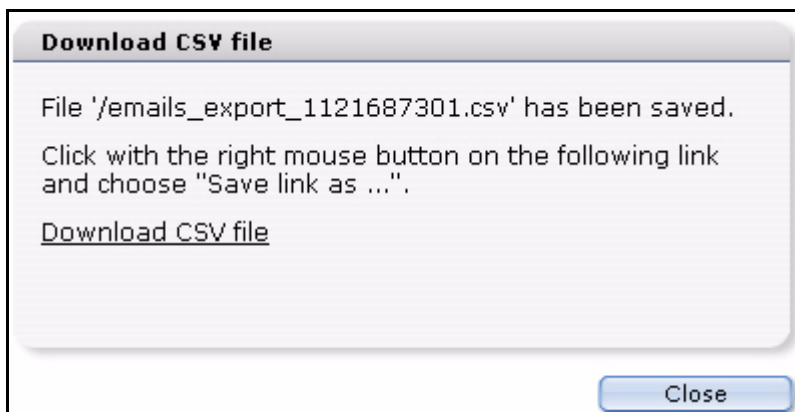


- Select a *File format* from the dropdownmenu which corresponds with your OS
- Set the *Delimiter* and *Enclose character* settings for the Export. Usually you can maintain the defaults (semicolon and double quote), as you can define them at the import in the spreadsheet.

4 When you finished your settings, click the *Export* button

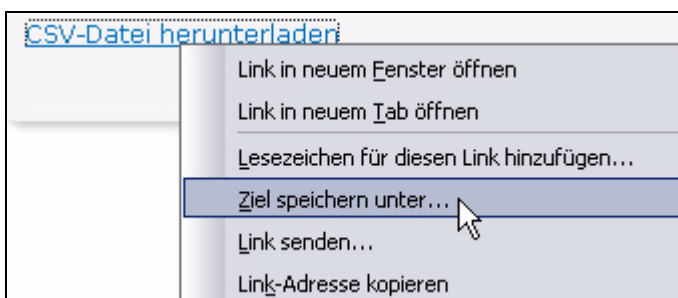
The window Download CSV file opens

Figure 18 Download CSV file



5 Use your right mouse button to click on the link and save the CSV file on your local hard drive

Figure 19 Save CSV file



Note: This procedure depends on your OS and browser; in our example, we use Mozilla Firefox on a Windows XP Operating System

6 Select a filename and set the file extension to .csv (siehe Figure 20)

Figure 20 Setting filename

Dateiname: ▼ Speichern

Dateityp: ▼ Abbrechen

- 7 Click on Save
- 8 Open the file in your spreadsheet (in our example we use OpenOffice)
- 9 Select the import options according to the choices you made during the export (see Figure 21)

Figure 21 CSV-Import in Open Office

Import

Zeichensatz: ▼ OK

Ab Zeile: ▼ Abbrechen

Trennoptionen

Feste Breite

Getrennt

Tabulator Komma Andere

Semikolon Leerzeichen

Felgtrenner zusammenfassen ▼

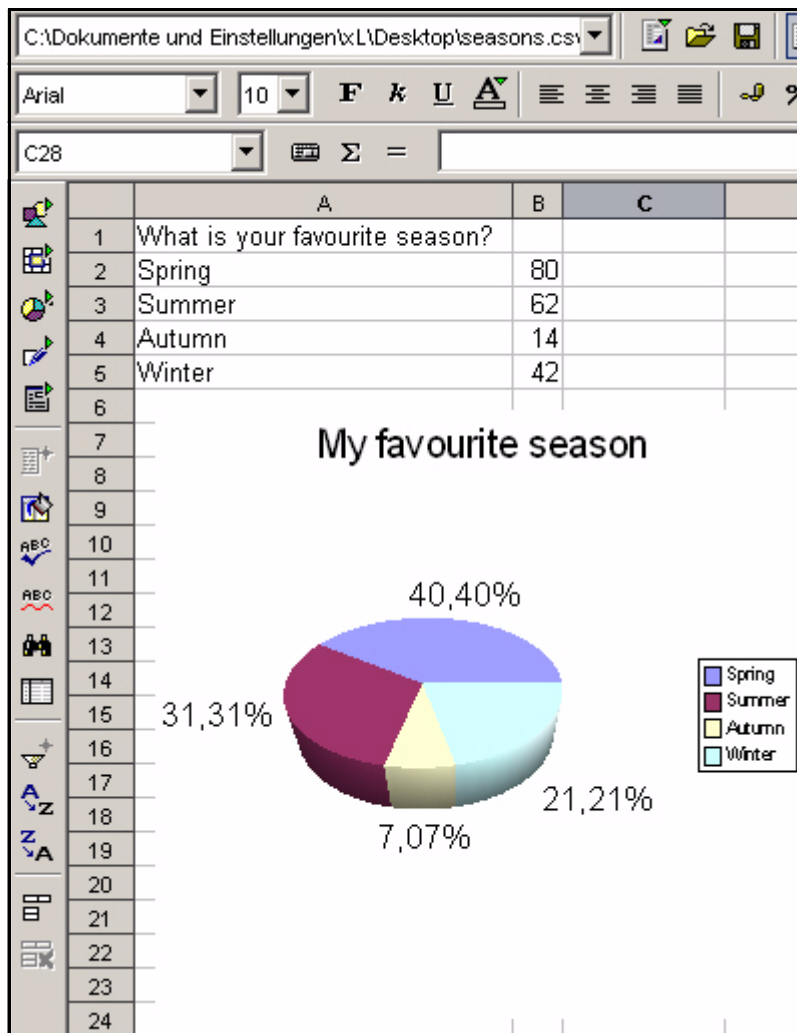
Felder

Spaltertyp:

Standard
1 Wie zufrieden sind sie mit den Produkten aus unserem Hause?
2 Sehr
3 überwiegend
4 ziemlich
5 gar nicht
6 keine Angabe

- 10 Click OK
 - The data of your voting is opened in the Open Office spreadsheet*
- 11 Now you can easily save, process or evaluate graphically your data from the spreadsheet

Figure 22 Voting data in Open Office



12 This procedure is finished

Note: Analogously to the described approach the data takeover works of course in other software which can process CSV files as for example Microsoft Excel or similar

3 Practical examples for the template design

This chapter shows you how you can insert Votings in your page. You can find these examples in the directory *Demo* which comes with every webEdition installation from version 3.4 on.

The following topics are treated in this chapter:

- 3.1 "Creating a template for a Vote" on page 29
- 3.2 "Displaying the Vote result" on page 30
- 3.3 "Summary page for multiple Votes" on page 32

3.1 Creating a template for a Vote

To display a voting on a webEdition page, the template must contain a `<we:voting>` tag. The tag `<we:votingSelect/>` is used to select a voting. With the `<we:votingField>` tag, you can select single fields of a voting. `<we:answers>` appeals to the answers of the voting. Please refer to the template `/we_demo/voting/voting.tpl` in the actual `we_demo`.

Example

```
<we:voting name="voting">
```

The Voting named "voting" starts here

```
<we:form id="240" method="post">
```

The result will be sent to the document with the id 240, after a vote has been cast.

After a click on result, the document with the id 240 will be called, too

```
<we:votingSelect firstentry="----" submitonchange="true" />
```

A selectbox with your Votings is displayed for the editor to choose from

```
<input type="hidden" name="votingId" value="<we:votingField
name="id" type="voting" />" />
```

In our example, the same page should be used for "Result" and "Send Vote". The result page thus must not be adjusted to which voting should be displayed. These are the possibilities: a vote was given and sent, then the fitting voting will be automatically selected. If no vote was cast, nothing will be sent, and thus the voting can not be detected automatically, thus the voting id is sent.

```
<h2><we:votingField name="question"></h2>
```

The Voting question is displayed

```
<we:answers>
```

```

    <li><we:votingField name="answer" type="radio"
class="votingAnswer"><label for="<we:votingField name="id"
type="radio">"><we:votingField name="answer"
type="text"></label></li>
</we:answers>

```

The answers of the selected voting are displayed with radiobuttons for selection

```

    <input type="submit" value="Send" />
    <input type="submit" value="Result" />

```

The vote can be cast or the Result can be displayed

```

</we:form>
</we:voting>

```

Voting part of template finished

This displays shows a simplified variant free of layout, of the template *voting.tpl* on which the document *voting.php* is based. It contains all tags which are necessary to give the possibility to the editor to be able to select a voting which was created with the Voting Module, simply in the document. See Figure 23 for a document which is based on the template

Figure 23 Simple Voting

3.2 Displaying the Vote result

Now we display the result of the above Voting on a result page. In this case, we keep to a simplistic variant of the demo template */we_demo/voting/result.php*.

Note: Please note the `<we:writeVoting />` tag has to be in the very first line of your template!

Example

```

<we:writeVoting />

```

Use this tag to write a cast vote into the Database

```

<we:ifVarEmpty match="votingId" type="request">

```

If no votingId is submitted (e.g. because no voting was selected), the default voting is displayed

```

<we:setVar to="request" nameto="votingId" value="6" />
</we:ifVarEmpty>

```

The default votingId is set to "6" here; this depends on your individual IDs

```
<we:voting name="voting" id="\$_REQUEST['votingId']">
```

The result of the above defined name "voting" and the submitted ID will be displayed here

```
Voting from: <we:votingField name="date" type="text"
format="d.m.Y" />
<br />
<br />
```

The set date of the Voting is displayed

```
<table class="voting" summary="This table contains the
Voting<we:votingField name="question" type="text" /> from
<we:votingField name="date" type="text" format="d.m.Y" />">
<tr>
<th colspan="2"><we:votingField name="question" type="text"
/></th>
```

The question is displayed

```
<tr>
<we:answers>
```

The answers are listed

```
<tr>
<td class="answer"><we:votingField name="answer" type="text"
/></td>
```

The text of the answer is displayed

```
<td style="width: 150px;"><div style="background: yellow; width:
<we:votingField name="result" type="percent" />%; height:
12px;border:1px solid red;" /></div></td>
```

Beams are generated which show the proportional distribution on the responses

```
<td><we:votingField name="result" type="percent" />%</td>
```

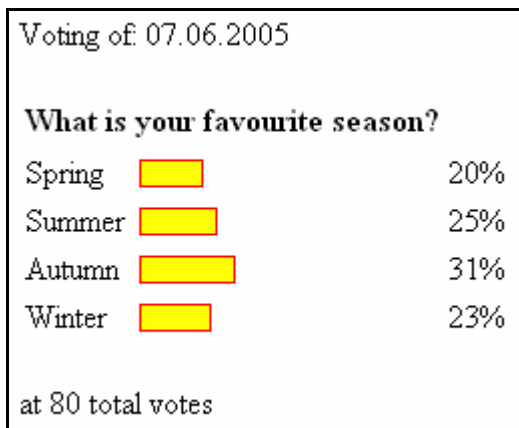
The percentage is displayed

```
</tr>
</we:answers>
</tr>
</table>
<br />
at <we:votingField name="result" type="total" /> cast votes
```

The total number of cast votes is indicated

```
</we:voting>
```

Here, too, the result is a simplistic version of the result page *result.php* from the webEdition Demo

Figure 24 Voting Result

3.3 Summary page for multiple Votes

Now we create a template with which we can display an overview of several Votings. Compare moreover to the template `/we_demo/voting/archive.tmpl` from the webEdition Demo

Example

```
<we:votingList name="voteList" groupid="0" rows="10" desc="true"
 subgroup="false">
```

With the `<we:votingList>` Tag you create a list of your votings. In this case with the groupid "0"; i.e. all votings. By means of groupid you can quite simply create overviews of groups of summarized Votings. Use this function to be able to display specially themed groups separately

```
<we:repeat>
<br />
Umfrage vom: <we:votingField name="date" type="text"
format="d.m.Y" />
<br />
<br />
<table class="voting" summary="This table contains the
voting<we:votingField name="question" type="text" /> from
<we:votingField name="date" type="text" format="d.m.Y" />">
```

The date of the voting is displayed

```
<tr>
<th colspan="2"><we:votingField name="question" type="text"
/></th>
```

Displays the question

```
<tr>
<we:answers>
<tr>
<td class="answer"><we:votingField name="answer" type="text"
/></td>
```

Shows the answers

```
<td style="width: 150px;"><div style="background: yellow;
width: <we:votingField name="result" type="percent" />%; height:
12px;border:1px solid red;" /></div></td>
```

Creates beams for the results


```
<td class="result"><div
class="resultPercent">&nbsp;<we:votingField name="result"
type="percent" /> %</div><div class="votingBar" style="width:
<we:votingField name="result" type="percent" />%;"></div></td>
```

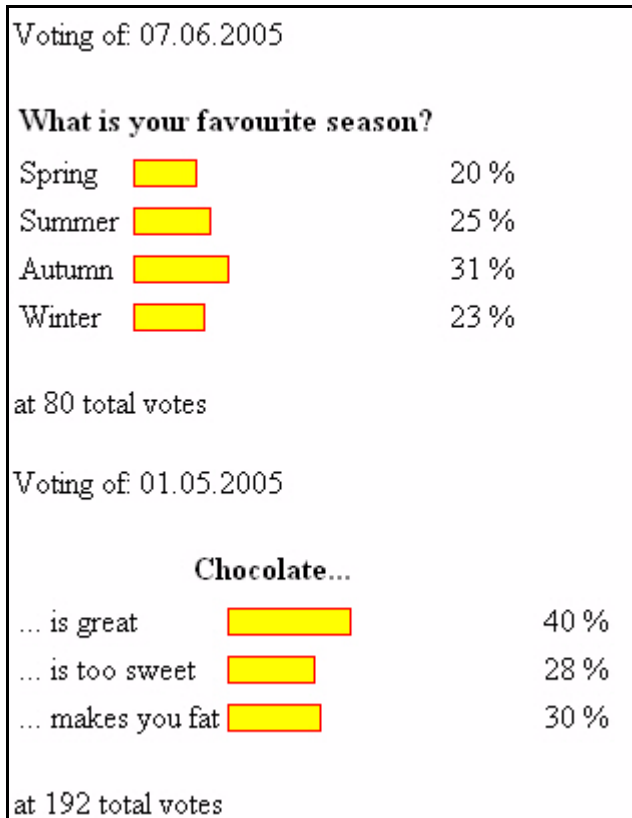
The proportional distribution of the replys is indicated

```
</tr>
</we:answers>
</tr>
</table>
<br />
at <we:votingField name="result" type="total" /> cast votes
```

Shows the total number of votes

```
<br />
</div>
</we:repeat>
</we:votingList>
```

Figure 25 Voting summary



Index

A

audience profile 11

we:tags 13

C

Create Voting 21

I

Inquiry view 19

R

reference documentation 11

Result view 19

T

Template for Votingsummary 32

Typographical conventions 12

V

Voting

creation of 21

display result 23

display result of 23

Template 29

Voting export 24

Voting Module

Definition 15

Explorermenu 16

import CSV files in spreadsheet 26

Revote 18

Voting Version 19

Votinggroups 23

Votingproperties 18

W

we:tags

attribute values 13

webEdition

on-line documentation 11

Voting Module

User Guide

Standard 4.1.1
October 2006
Printed in Germany

© 2006 webEdition Software GmbH
All rights reserved.

