



webEdition
manage your content

Spell Checker



4.1.1 Oktober 2006

Spell Checker

User Guide

Standard 4.1.1
October 2006

© 2006 webEdition Software GmbH
All rights reserved.

Printed in Germany

webEdition Software GmbH does not extend any guarantee or warranty concerning the accuracy and correctness of any information contained in this manual. This manual may not be reproduced by any means, either electronically or mechanically, photocopied, recorded, reproduced or transferred by information storage or information retrieval systems by the purchaser, for purposes other than private use without the express written consent by webEdition Software GmbH. The purchaser is authorized to make one backup copy of the software. A copy of this software can be requested from webEdition Software GmbH at any time or it can be downloaded at www.webedition.de. Neither webEdition Software GmbH nor suppliers of webEdition Software GmbH shall be held liable for any damage (this shall include, without restriction, any damage arising from lost profits, operation breakdowns, loss of business information or data or any other financial losses), which arise from the use of this product or from the inability to use this product, even in the event that webEdition Software GmbH has been informed of the possibility of such damage. In any case of damage, liability of webEdition Software GmbH shall be limited to the amount you have actually paid for the product.

Microsoft Windows and Explorer are trademarks of Microsoft Corporation. Macintosh and Apple are trademarks of Apple Computer Inc. UNIX is a trademark of UNIX System Laboratories. All other trademarks are the property of their respective owners.

Contents

About this document 11

1 Spell Checker: Introduction 15

- What is the webEdition Spell Checker module? 15
 - Installation 15
 - General information and navigation 15
 - Open module settings 16
 - The spell checking 17
-

2 Using the Spell Checker 19

- Spelling check 19
 - Adding new dictionaries 20
 - User dictionary 23
 - New attributes for we:tags 24
 - Spell Checker in objects 24
-

Index 25

List of figures

- Figure 1 Modules Dropdown Menu 16
- Figure 2 Installed dictionaries 16
- Figure 3 User dictionary view 17
- Figure 4 Spell Checker buttons in webEdition 17
- Figure 5 Button Spell Checker 19
- Figure 6 Java security alert 19
- Figure 7 Spell Checker in the Java Applet 20
- Figure 8 Installed dictionaries 21
- Figure 9 Add dictionary files dialogue 21
- Figure 10 Selecting files for dictionary 22
- Figure 11 Dictionary creation 23
- Figure 12 Activating dictionary 23
- Figure 13 User dictionary view 24

List of procedures

- Procedure 1 Check spelling in a textarea 19
- Procedure 2 Installing a new dictionary 21
- Procedure 3 Creating and extending the User dictionary 24

About this document

Purpose of this document

This document treats the webEdition Spell Checker Module and how to use it.

You can use this manual to learn:

- what the spell checker Module is
- how to install the module
- how to use this module to check spelling in webEdition documents
- how to create user dictionaries

Audience

This document is intended for personnel in the following groups:

- Web administrators
- Web editors

The webEdition customer documentation suite

The documentation team publishes new webEdition documents to support the release of all webEdition features, modules and enhancements.

You can consult our documentation suite for detailed information about the modules you have purchased or about webEdition products that you may wish to purchase in the future. All customer documentation is available in portable document format (PDF) on the webEdition documentation Web page.

On-line reference documentation

The webEdition customer documentation suite comprises the following books, all of which you can obtain at URL:

<http://www.webedition.de/english/downloads/Documentation.html>

Standard webEdition documentation

The following books support the webEdition Standard suite:

- *The webEdition User Guide*
- *The webEdition Installation Guide*
- *The webEdition Tag Reference*

Documentation for webEdition modules

The following books support the webEdition modules:

- *The Customer Management and Customer Management PRO Module User Guide*
- *The Database/Object Module User Guide*
- *The Editor-PlugIn User Guide*
- *The Newsletter and Newsletter PRO Module User Guide*
- *The Scheduler and Scheduler PRO Module User Guide*
- *The Shop Module User Guide*
- *The Task/Messaging Module User Guide*
- *The User Management and User Management PRO Module User Guide*
- *The Workflow Module User Guide*
- *The Export Module User Guide*
- *The Spell Checker User Guide*

What precautionary messages mean

webEdition documents include attention and caution messages, which are designed to draw your attention to important instructions.

Attention boxes

An attention box identifies information that is necessary for the proper performance of a specified task. For example:

ATTENTION

You must have the appropriate permissions in your user profile to complete this procedure. Permissions are assigned to you by your webEdition system administrator. Contact your webEdition system administrator for further details.

Caution boxes

Caution messages indicate that there are possible risks to your software or database if you perform a specified task without taking the suggested appropriate precautions. For example:



CAUTION

Database warning

If you complete this procedure, your database will be overwritten.

How commands, system responses and we:tags are represented

The commands, system responses and webEdition tags (called we:tags) used in this document conform to the following conventions.

Web interface commands

Commands performed through a Web browser are shown in *italic* typeface. For example:

Click on the *Save* button.

Menu-based commands performed in a Web browser are shown in *italic* typeface. Drop-down or nested menu commands are separated by an input prompt (>). For example:

Select *Customers > New* from the main menu of the Customer Management Module.

webEdition tags and template code

The webEdition templates use a specialized set of programming tags based on the PHP programming language. These webEdition tags or `we:tags` are displayed in *courier* typeface and in angled brackets:

Opening tags appear thus: `<we:tag/>`

Closing tags appear thus: `</we:tag>`

The programming code used in webEdition templates is also represented in this document by *courier* typeface:

```
<we:sessionStart/>
<we:ifRegisteredUser>
Hello: <we:sessionField Last name="user name" type="print"/><br>
Logged in
</we:ifRegisteredUser>
```

Attribute variables

Attributes and variables appear in *courier italic* typeface. For example:

```
<we:hidden name="attribute1">
```

How to check the document version and issue

The information on the title page of this document indicates the version and issue for this publication. The version and issue also appear in the footer on every even-numbered page.

The first two digits in the document numbering scheme indicate the version. The version number increases each time the document is updated to support a new software release. For example, the first release of a document is 01.01. In the next software release cycle, the first release of the same document is 02.01.

The second two digits in the document numbering scheme indicate the issue. The issue number increases each time the document is revised and re-released in the same software release cycle. For example, the second release of a document in the same software release cycle is 01.02.

Customer service

For further information about webEdition, please consult our Web page, or contact our customer service department:

- Web Page: <http://www.webedition.biz/>
- E-mail:
 - Technical support: technik@webEdition.de
 - Sales: sales@webEdition.de
 - Information/Help: info@webEdition.de

1 Spell Checker: Introduction

This chapter is intended to help you familiarize with the webEdition *Spell Checker* and its features. This chapter treats what the module does and how to install it. You can also find information here about the basic layout and command features for the Module. These topics are treated in the following sections:

- Section 1.1, "What is the webEdition Spell Checker module?,"
- Section 1.2, "Installation,"
- Section 1.3, "General information and navigation,"
- Section 1.4, "Open module settings,"
- Section 1.5, "The spell checking,"

1.1 What is the webEdition Spell Checker module?

With the webEdition Spell Checker it is possible to check the correct spelling within webEdition text and input fields. Thus, the editor no longer has to transfer the texts into other applications and retransfer after the control.

The Spell Checker can check the spelling in several languages and user's dictionaries can be created and added. The expressions which are added to the general dictionary are accessible to all webEdition users, so that, for instance, expressions specific for companies can be integrated into the spelling control.

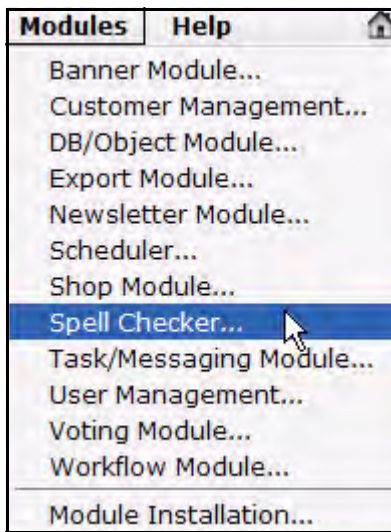
Note: Please note, that the webEdition spell checker is a so-called Java applet! Java must be activated in your browser.

1.2 Installation

The installation procedure for all modules is described in *The webEdition Installation, Update and Backup Procedures*. A .pdf version of this guide is available at the URL: <http://www.living-e.de>

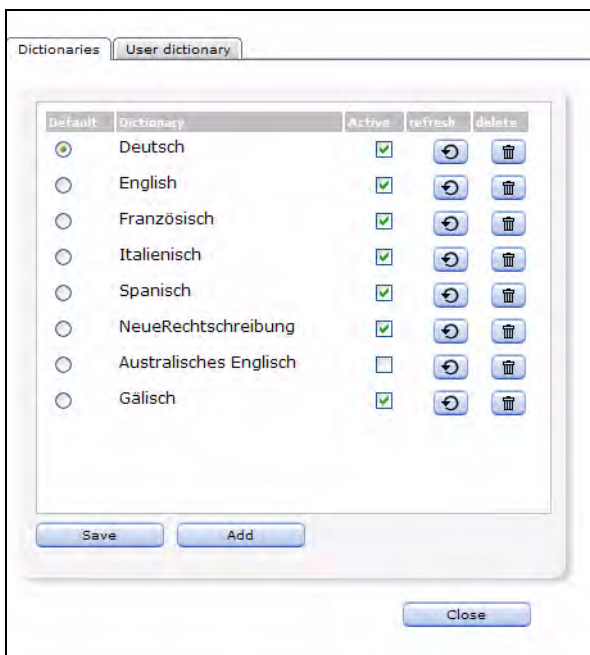
1.3 General information and navigation

After the installation, a new menu item appears in the webEdition *Modules* menu. See Figure 1.

Figure 1 Modules Dropdown Menu

1.4 Open module settings

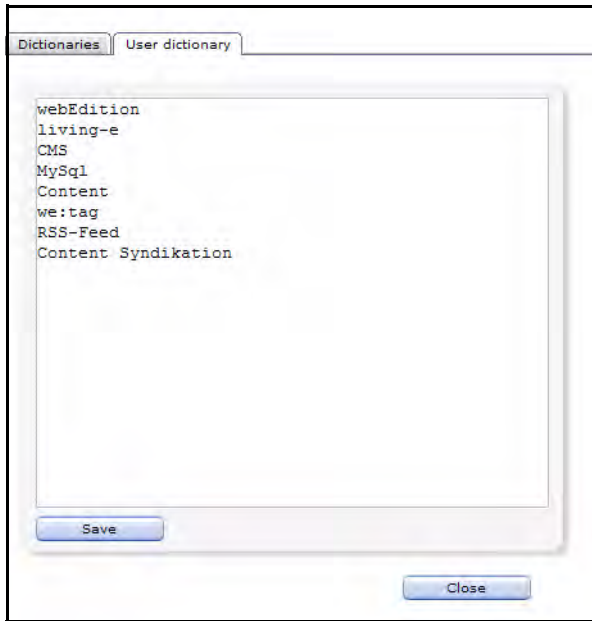
To open the module settings, select *Spell Checker...* from the *Modules* dropdown menu on the webEdition main screen. The *Spell Checker* window is opened as in Figure 2.

Figure 2 Installed dictionaries

In this window you can add new dictionaries, as well as update or delete existing ones. Click the *User dictionary* tab to access the user dictionary where you can add words to the general user dictionary (see Figure 3).

Note: The *Spell Checker* contains at delivery the dictionaries for German and English.

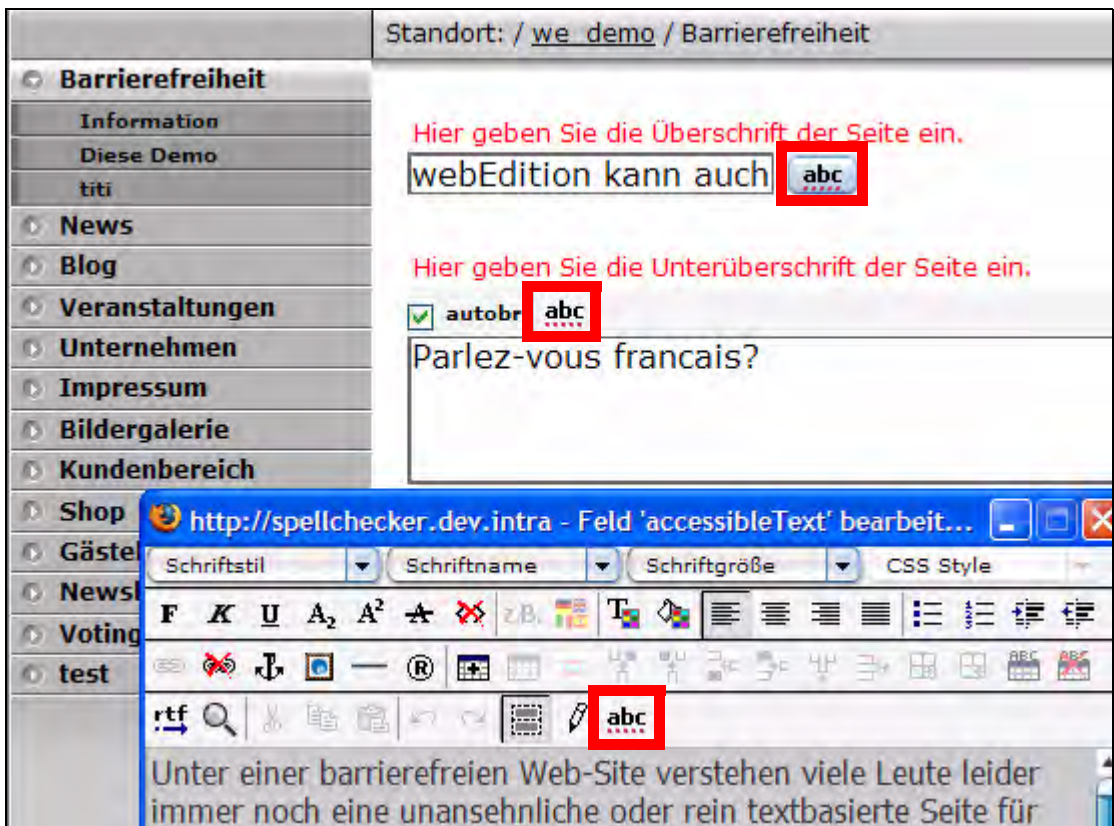
Figure 3 User dictionary view



1.5 The spell checking

After installation of the spell checking you can use it immediately for text areas and input fields. An additional button is displayed at the suitable text fields.

Figure 4 Spell Checker buttons in webEdition



To launch the Spell Checker, simply click on the *abc* button. The language of the spell checking sticks to the *language* HTML-tag in the template and the standard language defined in the spell checking-module settings.

2 Using the Spell Checker

In this chapter you will learn how to use the Spell Checker, import new languages and add words to the user dictionary and which webEdition-tags are adjusted for the module.

2.1 Spelling check

In this procedure the use of the Spell Checker is described exemplarily for a webEdition text area

Procedure 1 Check spelling in a textarea

webEdition is running

- 1 Enter your text in a Textarea
- 2 Click the button *Spell Checker*

Figure 5 Button *Spell Checker*



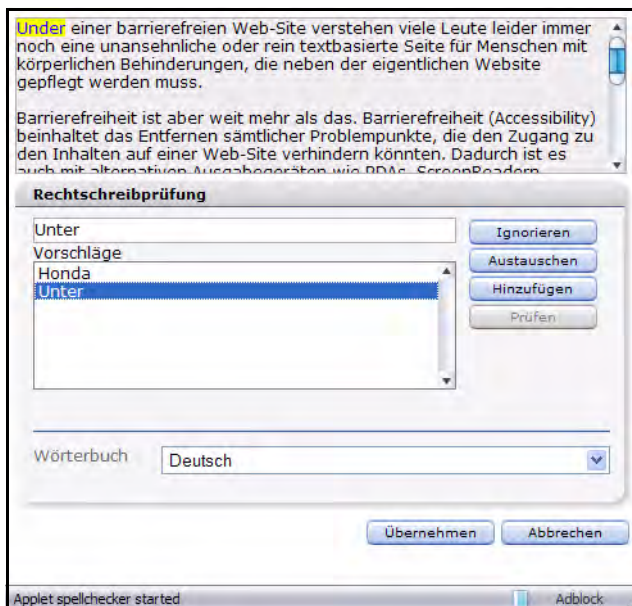
The Java Applet for the checking is opened in a separate window

Note: A Java security warning may be displayed (see Figure 6). Please permit the execution of the applet, so that the spell checking can be executed

Figure 6 Java security alert



Figure 7 Spell Checker in the Java Applet



- 3 If a spelling error is discovered, it is indicated in yellow. Now you have the following possibilities to handle the error:
 - *Ignore*: Click the *Ignore* button to keep the objected manner of writing and continue the spell checking.
 - *Exchange*: Select the correct spelling from the *Suggestion* or type the correct word in the inputfield and click *Exchange* to correct the marked word.
 - *Add*: Click the *Add* button to add the word to the user dictionary so it will be recognized as correct when the spelling is checked the next time

Note: Words added here are only added to the personal user dictionary of the logged in user. To add a word for all users, switch to the *User dictionary* and enter the word there!

 - *Check*: This button is greyed out at the beginning of the checking procedure. After the spell checking was performed, you can restart the spell checker by clicking on the *Check* button.
- 4 When all corrections are finished, click *Accept* to confirm the changes made. Click *Cancel* to reject the corrections.
- 5 Save the webEdition document in which the corrections have been made (otherwise, the corrections will not be on your website!)
- 6 This procedure is finished

Note: Please note, that the Spell Checker uses the language defined as default language in the settings of the Spell Checker module-window. You can change the language to be checked at any time via the *Dictionary* dropdownmenu.

2.2 Adding new dictionaries

The webEdition Spell Checker uses the *Ispell* technology, which is also used by e.g. OpenOffice. Thus, many free dictionaries are available. Further information about Ispell and download links can be found at the following URLs:

<http://ficus-www.cs.ucla.edu/geoff/ispell.html>,

<http://de.openoffice.org/spellcheck/about-spellcheck-detail.html> oder

<http://wiki.services.openoffice.org/wiki/Dictionaries>

The step-by-step installation of a new dictionary is described as follows:

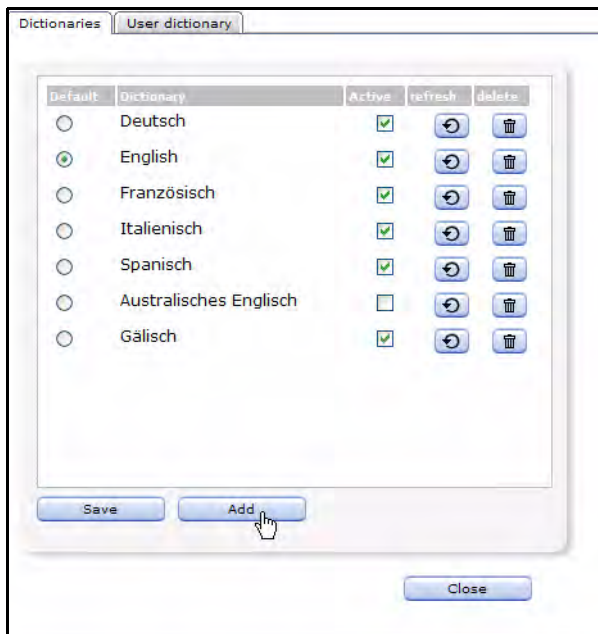
Procedure 2 Installing a new dictionary

webEdition is started, the dictionary has been downloaded

1 Click *Modules > Spell Checker...*

The Spell Checker module window opens. All installed dictionaries are displayed here

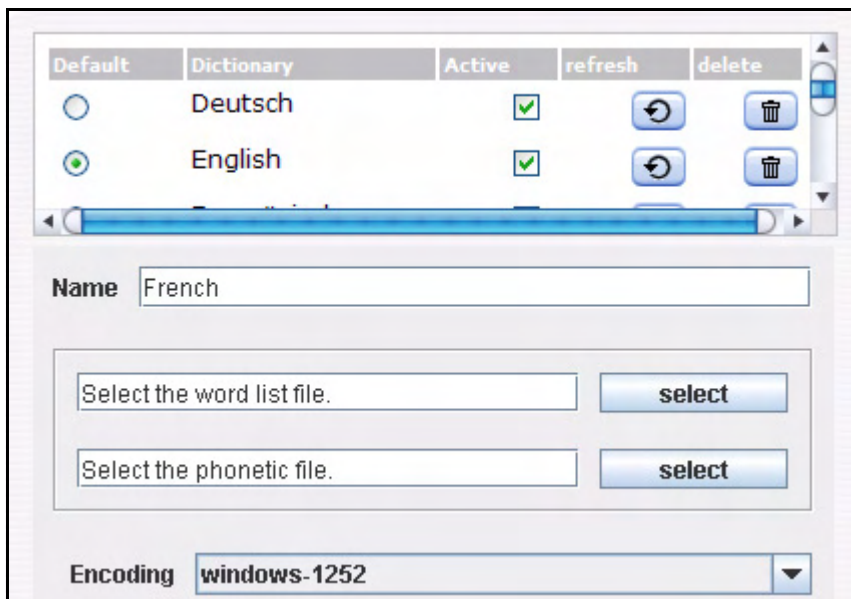
Figure 8 Installed dictionaries



2 Click *Add*

In the module window, the selection dialogue for files is displayed now

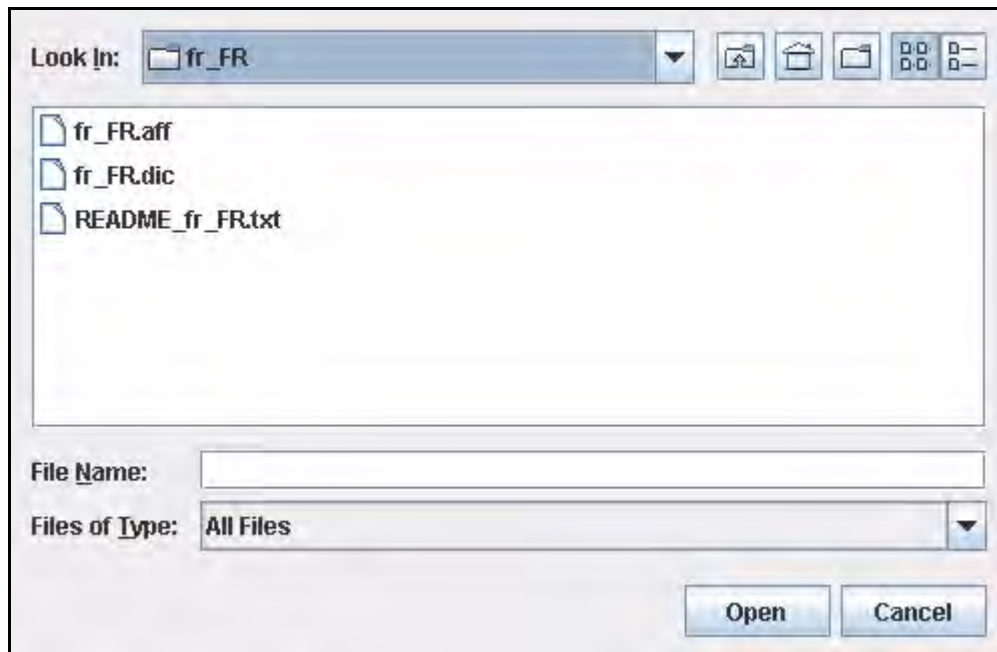
Figure 9 Add dictionary files dialogue



3 Enter the name of the new dictionary in the field *Name*, in our example *French*

- 4 Click the *select* buttons to upload the *word list file* and the *phonetic file*

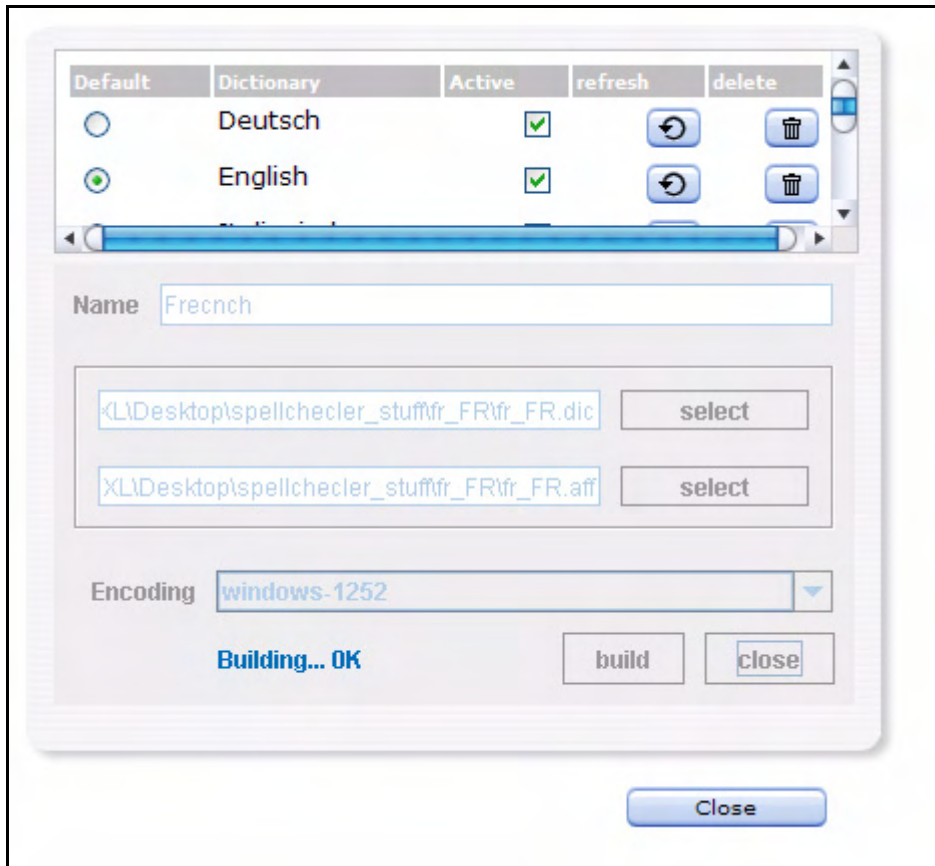
Figure 10 Selecting files for dictionary



Note: The *word list* is in our example the file `fr_FR.dic`. It contains the words for the dictionary. The *phonetic file* is the file `fr_FR.aff`. It contains the rules for the dictionary. Search accordingly for the files with the ending `.dic` and `.aff`!

- 5 You may adjust the *encoding* in the corresponding dropdown menu *Kodierung*. This function is only for experienced users. As a rule the correct coding is already preset, so that you must change nothing
- 6 Click the *build* button
The dictionary is now being created

Figure 11 Dictionary creation



Note: This process may take up some minutes according to size of the dictionary and speed of your server

- 7 The dictionary has been created. To be able to use it in webEdition, you have to tick the *active* checkbox

Figure 12 Activating dictionary



- 8 If you want the newly installed dictionary to be your default dictionary, please activate the *Default* radiobutton.
- 9 You may now use your new dictionary

2.3 User dictionary

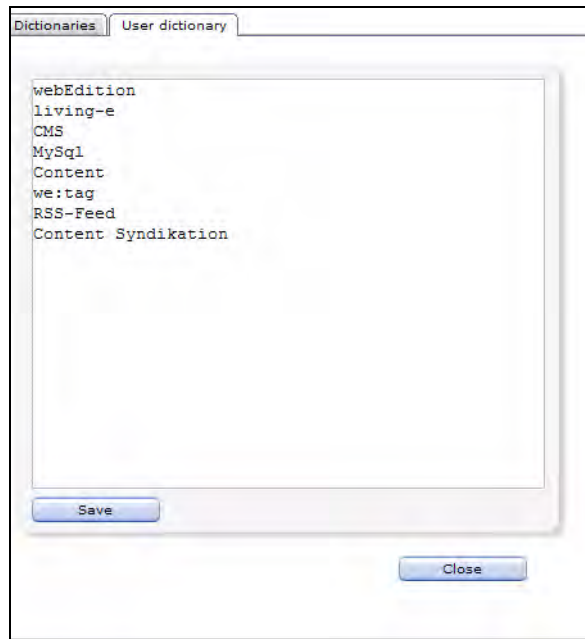
With the webEdition Spell Checker, it is very easy to create an user dictionary which is available for all webEdition users. This is very helpful for many expressions specific for branches and companies which are not available in the normal dictionaries. Thus a uniform manner of writing style can be guaranteed for all editors who operate a webEdition site.

Procedure 3 Creating and extending the User dictionary

webEdition is started

- 1 Open Spell Checker with *Modules > Spell Checker...*
The Spell Checker window opens
- 2 Click the *User dictionary* tab to switch to that view

Figure 13 *User dictionary view*



- 3 Now enter the expressions to be added to the user dictionary
- 4 After having entered the words, click the *Save* button
Now the entered words are available to all users for the spell checking

Note: The words entered here are available to all users. By contrast the words which you add with the adding function within the correction, are added only for the user who performs the correction.

2.4 New attributes for we:tags

For the `we:tags` `we:textarea` and `we:input` the additional attribute `spellcheck` has been added. You can set this attribute to `true` or `false`, so that the spell checking is displayed (`true`) with the suitable input field or text area or not (`false`). This value is set to `false` by default; the buttons for the spell checker are thus not displayed!

2.4.1 Spell Checker in objects

To be able to use the spell checking in objects, you have to activate the spell checking for the respective class. Open the class and set the attribute `spellcheck` for the desired WYSIWYG range to `true`. Thus, open the *Default* textareas in the class and click on the button *Attributes...*

Index

A

Audience 11
audience profile 11

C

Check spelling 19

D

Dictionaries
add 20

R

reference documentation 11

S

Spell Checker
installation 15

T

Typographical conventions 12

U

User dictionary 23
create 23
edit 23

W

we:tags
attribute values 13
webEdition
documentation suite 11
on-line documentation 11
we:tags 13

Spell Checker

User Guide

Standard 4.1.1
October 2006
Printed in Germany

© 2006 living-e AG
All rights reserved.

