



**webEdition**  
manage your content

## **Export Module**





---

# Export Module

## User Guide

---

Standard 4.1.1  
October 2006

---

© 2006 living-e AG  
All rights reserved.

Printed in Germany

living-e AG does not extend any guarantee or warranty concerning the accuracy and correctness of any information contained in this manual. This manual may not be reproduced by any means, either electronically or mechanically, photocopied, recorded, reproduced or transferred by information storage or information retrieval systems by the purchaser, for purposes other than private use without the express written consent by living-e AG. The purchaser is authorized to make one backup copy of the software. A copy of this software can be requested from living-e AG at any time or it can be downloaded at [www.living-e.de](http://www.living-e.de). Neither living-e AG nor suppliers of living-e AG shall be held liable for any damage (this shall include, without restriction, any damage arising from lost profits, operation breakdowns, loss of business information or data or any other financial losses), which arise from the use of this product or from the inability to use this product, even in the event that living-e AG has been informed of the possibility of such damage. In any case of damage, liability of living-e AG shall be limited to the amount you have actually paid for the product.

Microsoft Windows and Explorer are trademarks of Microsoft Corporation. Macintosh and Apple are trademarks of Apple Computer Inc. UNIX is a trademark of UNIX System Laboratories. All other trademarks are the property of their respective owners.

---



---

# Contents

---

---

## About this document 11

---

### 1 Export Module: Introduction 15

- What is the webEdition Export Module? 15
- Installation 15
- General information and navigation 15
- Start Module 16
  - Export Module explorer menu 16
- The menus 17
  - The Export-dropdown menu 17
  - Help-dropdown menu 17
- Export Module views 17
  - The property view 17
  - The Options view 18
  - The Details view 20

---

### 2 Using the Export Module 23

- Define a new export 23
- Export groups 24

---

## Index 25

---



**List of figures**

- Figure 1 Modules Dropdown Menu 16
- Figure 2 Export Module: Quickstart Screen 16
- Figure 3 Export Module explorermenu 17
- Figure 4 Export dropdownmenu 17
- Figure 5 Help-dropdownmenu 17
- Figure 6 The Property view 18
- Figure 7 The Options view 19
- Figure 8 Details view 21
- Figure 9 New group in the explorermenu 24





**List of procedures**

Procedure 1 Performing an export 23

Procedure 2 Create Exportgroup 24



---

# About this document

---

## Purpose of this document

This document treats the webEdition Export Module and how to use it.

You can use this manual to learn:

- what the Export Module is
- how to install the module
- how to use this module to export documents, objects, templates and classes
- how to create exportgroups

## Audience

This document is intended for personnel in the following groups:

- Web administrators
- Web editors

## The webEdition customer documentation suite

The documentation team publishes new webEdition documents to support the release of all webEdition features, modules and enhancements.

You can consult our documentation suite for detailed information about the modules you have purchased or about webEdition products that you may wish to purchase in the future. All customer documentation is available in portable document format (PDF) on the webEdition documentation Web page.

### On-line reference documentation

The webEdition customer documentation suite comprises the following books, all of which you can obtain at URL: <http://www.living-e.de>

#### Standard webEdition documentation

The following books support the webEdition Standard suite:

- *The webEdition User Guide*
- *The webEdition Installation Guide*
- *The webEdition Tag Reference*

### Documentation for webEdition modules

The following books support the webEdition modules:

- *The Customer Management and Customer Management PRO Module User Guide*
- *The Database/Object Module User Guide*
- *The Editor-PlugIn User Guide*
- *The Newsletter and Newsletter PRO Module User Guide*
- *The Scheduler and Scheduler PRO Module User Guide*
- *The Shop Module User Guide*
- *The Task/Messaging Module User Guide*
- *The User Management and User Management PRO Module User Guide*
- *The Workflow Module User Guide*
- *The Export Module User Guide*

### What precautionary messages mean

webEdition documents include attention and caution messages, which are designed to draw your attention to important instructions.


#### Attention boxes

An attention box identifies information that is necessary for the proper performance of a specified task. For example:

<p><b>ATTENTION</b></p> <p>You must have the appropriate permissions in your user profile to complete this procedure. Permissions are assigned to you by your webEdition system administrator. Contact your webEdition system administrator for further details.</p>
--

#### Caution boxes

Caution messages indicate that there are possible risks to your software or database if you perform a specified task without taking the suggested appropriate precautions. For example:

	<p><b>CAUTION</b> <b>Database warning</b> If you complete this procedure, your database will be overwritten.</p>
---	--

### How commands, system responses and we:tags are represented

The commands, system responses and webEdition tags (called we:tags) used in this document conform to the following conventions.

## Web interface commands

Commands performed through a Web browser are shown in *italic* typeface. For example:

Click on the *Save* button.

Menu-based commands performed in a Web browser are shown in *italic* typeface. Drop-down or nested menu commands are separated by an input prompt (>). For example:

Select *Customers > New* from the main menu of the Customer Management Module.

## webEdition tags and template code

The webEdition templates use a specialized set of programming tags based on the PHP programming language. These webEdition tags or we:tags are displayed in *courier* typeface and in angled brackets:

Opening tags appear thus: `<we:tag/>`

Closing tags appear thus: `</we:tag>`

The programming code used in webEdition templates is also represented in this document by *courier* typeface:

```
<we:sessionStart/>
<we:ifRegisteredUser>
Hello: <we:sessionField Last name="user name" type="print"/><br>
Logged in
</we:ifRegisteredUser>
```

## Attribute variables

Attributes and variables appear in *courier italic* typeface. For example:

```
<we:hidden name="attribute1">
```

## How to check the document version and issue

The information on the title page of this document indicates the version and issue for this publication. The version and issue also appear in the footer on every even-numbered page.

The first two digits in the document numbering scheme indicate the version. The version number increases each time the document is updated to support a new software release. For example, the first release of a document is 01.01. In the next software release cycle, the first release of the same document is 02.01.

The second two digits in the document numbering scheme indicate the issue. The issue number increases each time the document is revised and re-released in the same software release cycle. For example, the second release of a document in the same software release cycle is 01.02.

## Customer service

For further information about webEdition, please consult our Web page, or contact our customer service department:

- Web Page: <http://www.webedition.biz/>
- E-mail:
  - Technical support: [technik@living-e.de](mailto:technik@living-e.de)
  - Sales: [sales@living-e.de](mailto:sales@living-e.de)
  - Information/Help: [info@living-e.de](mailto:info@living-e.de)

---

# 1 Export Module: Introduction

---

This chapter is intended to help you familiarize with the webEdition Export Module and its features. This chapter treats what the module does and how to install it. You can also find information here about the basic layout and command features for the Export Module. These topics are treated in the following sections:

- Section 1.1, "What is the webEdition Export Module?,"
- Section 1.2, "Installation,"
- Section 1.3, "General information and navigation,"

## 1.1 What is the webEdition Export Module?

The Export Module allows webEdition users more control over the exporting of documents, templates, objects and classes from webEdition.

Contrary to the export function of the standard version of webEdition, you can define exactly, which individual parts of your project should be exported.

The import of the content that is exported with the Export Module is possible with every version of webEdition (from version 3.3), no separate module is required.

Importing new templates, objects or content is easily accomplished without interfering with existing content.

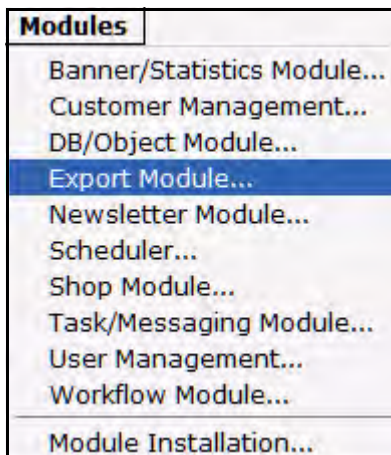
The Export Module is intended for users who want to maintain several webEdition web sites within one webEdition installation, as it enables the advanced user to export and import objects, document, classes and templates without interfering with the existing data.

## 1.2 Installation

The installation procedure for all modules is described in *The webEdition Installation, Update and Backup Procedures*. A .pdf version of this guide is available at the following URL: <http://www.living-e.de>

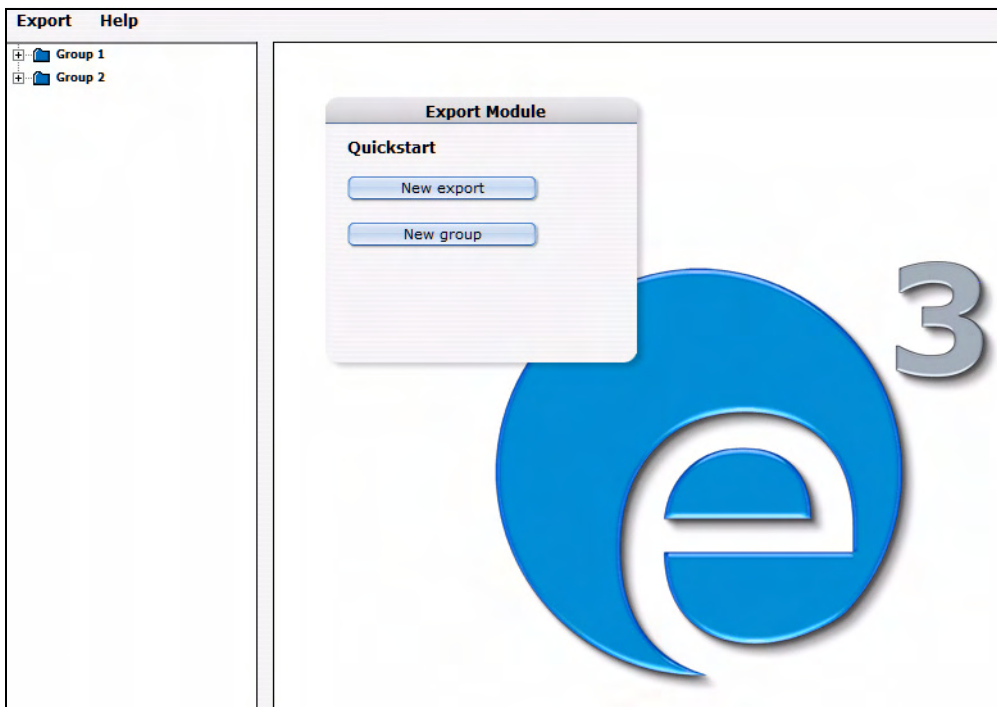
## 1.3 General information and navigation

After the installation, a new menu item appears in the webEdition *Modules* menu. See Figure 1.

**Figure 1 Modules Dropdown Menu**

## 1.4 Start Module

To open the Export Module, click on *Export Module...* from the *Modules* Dropdownmenu on the webEdition mainscreen. The Quickstart screen will appear, as shown in Figure 2.

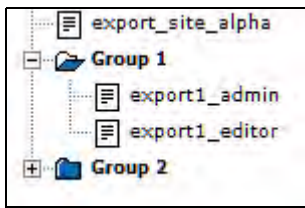
**Figure 2 Export Module: Quickstart Screen**

In the *Quickstart* screen, you can directly create a new export-profile or a group.

### 1.4.1 Export Module explorermenu

The explorermenu on the left hand of the screen shows a list of your exportprofiles and groups (see Figure 3).



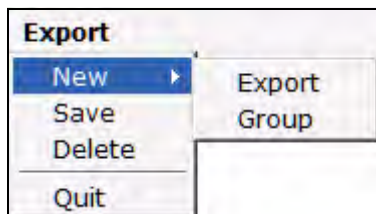
**Figure 3 Export Module explorer menu**

## 1.5 The menus

By selecting *Modules > Export Module*, you open the module view (see Figure 2). Here, you can find the dropdown-menus *Export* and *Help*.

### 1.5.1 The *Export*-dropdown menu

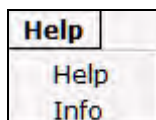
In the dropdown menu *Export*, the following items are located (see Figure 4).

**Figure 4 *Export* dropdown menu**

- *New (Export/Group)* Click *New > Export / Group* to define a new export profile resp. a new export group.
- *Save* Click *Save* to permanently save your export or export group.
- *Delete* Deletes the currently selected export or group.
- *Quit* Leave the module window and return to the webEdition main screen.

### 1.5.2 *Help*-dropdown menu

In the help-dropdown menu you will find the following items (see Figure 5).

**Figure 5 *Help*-dropdown menu**

- *Help*. This item provides Help screens.
- *Info*. This item provides information about the application.

## 1.6 Export Module views

The export module has the following views which can be accessed by clicking on the corresponding tabs: *Property*, *Options* and *Details*.

### 1.6.1 The *property* view

The basic settings for your export are defined in the *property* view.

Choose *Export > New > Export* to enter the *property* view (see Figure 6):

Figure 6 The *Property* view

The *Property* view consists of the areas *Property*, *Export to* and *Selection*.

- *Property*: Here, you give your export profile a unique name. You can also assign your export to a *group* by clicking on the *select* button. The name given here is the name by which the export profile is saved within the webEdition export module, not the file name by which the export is saved on the server or your local disc!
- *Export to*: Enter a filename for your export-file. This is the name by which the file is saved on your server or harddisc. If you choose *Server* from the dropdownmenu, you can select a directory on your server, where the exported file will be saved.
- *Selection*: Here, you can select the documents or objects to be exported. Choose *Automatic Selection* to define the export using the document- or objecttype. When using the *Manual Selection*, documents, templates, objects or classes can be selected individually from the tree.

### 1.6.2 The *Options* view

The *Options* view consists of the areas *Documents/Templates*, *Objects/Classes*, *Doctypes/Categories*, *Export Depth* and *Owners Data* (see Figure 7). These areas are explained in the following.

Figure 7 The *Options* view

The screenshot shows the 'Options' view for an export operation. The window title is 'Export: weExport\_1115041759'. The 'Options' tab is selected. The interface is organized into sections with checkboxes and informational text:

- Documents Templates:** Contains an information icon and text: 'The default template is the template that is defined in the document p ...'. Below it are four checkboxes: 'Export default templates', 'Export included documents', 'Export included objects', and 'Export linked documents'.
- Objects Classes:** Contains an information icon and text: 'The default class is the class that is defined in the object properties.'. Below it are two checkboxes: 'Export default classes' and 'Export embedded objects'.
- Doctypes/Categorys:** Contains two checkboxes: 'Doctypes' and 'Categorys'.
- Export depth:** Contains an information icon and text: 'The export deep defines the level for the export of the included documents. The field must be a number!'. Below it is a text input field with 'to level' followed by a box containing the number '5'.
- Owners data:** Contains an information icon and text: 'Export linked owners data.'. Below it is a checkbox: 'Export owners data'.

At the bottom of the window, there are two buttons: 'Save' and 'Export'.

### 1.6.2.1 The *Documents/Templates* area

In this area, the following checkboxes are located:

- *Export default templates*: Activate this checkbox to add the templates, on which the documents to be exported are based by default (this is set in the document preferences), to the export.
- *Export included documents*: Activate this checkbox to add so-called included documents to the export. Included documents are included in the document to be exported using the we:tags *we:include*, *we:form*, *we:url*, *we:linkToSeeMode*, *we:a*, *we:href*, *we:link*, *we:css*, *we:js*, *we:addDelNewsletterEmail*. This checkbox has to be activated, e.g., if the navigation of your site was integrated using an include and you want it to be in the export.
- *Export included objects*: This checkbox works like the checkbox *Export included documents*, but for objects. It affects included objects using the we:tags *we:object* or *we:form*.
- *Export linked documents*: Activate this checkbox to add internal documents to the export; internal documents are linked to the document to be exported by using the HTML-Tags *body*, *a*, *img*, *table*, *td*.

**Note:** These functions only apply to the export of documents and templates.

### 1.6.2.2 The *Objects/Classes* area

These two checkboxes are located in this area:

- *Export default classes*: Activate this checkbox to also export the class defined in the object properties.
- *Export embedded objects*: Activate this checkbox to also export objects which are included in the object to be exported.

#### **Example**

You included images as objects into an object of the class “articles”.

**Note:** These functions only apply to the export of objects and classes.

### 1.6.2.3 The *Doctypes/Categories* area

In this area you will find the following checkboxes:

- *Doctypes*: Activate this checkbox to add the doctypes of the exported documents to the export. This function only applies to the export of documents.
- *Categories*: If this checkbox is activated, the categories of the elements to be exported are also added to the export. This function applies to document- as well as to object categories.

### 1.6.2.4 The *Export depth* area

In this area, you can define, using a numerical value, the export depth of included, linked or template-based elements. If, e.g., you set the export depth to a value of “1”, at the export of a document with the checkbox *Export default templates* activated, will result in the template being included in the export. An included navigation (and its template), on the other hand, would not be included, even with the option *Export included documents* activated. To export the navigation, too, you would have to set the depth to “2”; setting it to “3” will also include the template of the navigation.

### 1.6.2.5 The *Owners data* area

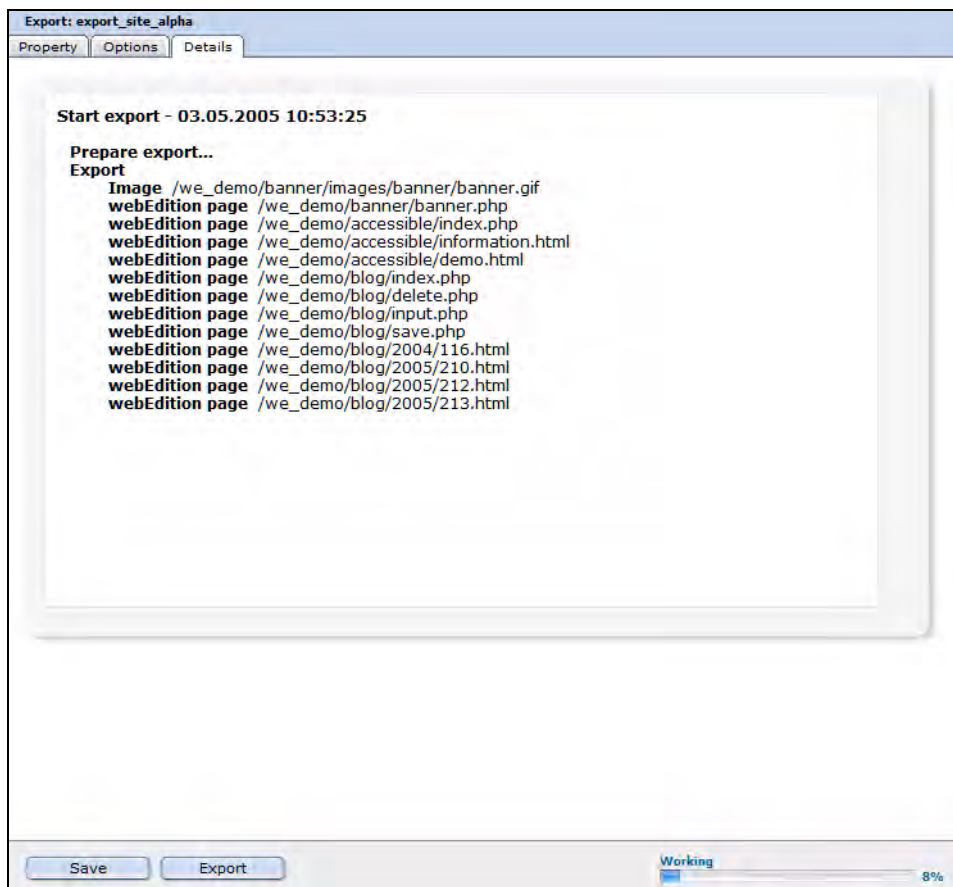
Activate the checkbox *Export owners data*, to integrate permissions and rights on documents, objects etc. in the exported file.

**Note:** The webEdition User Management (PRO) has to be installed for this function to work.

## 1.6.3 The *Details* view

In this view, the progress of the export will be displayed. All exported documents, templates, objects and classes are displayed here during the export process. The progress bar at the bottom of the screen indicates the export’s progress.

Figure 8 Details view





---

## 2 Using the Export Module

---

In this chapter, you will learn how to perform an export with the webEdition Export Module.

### 2.1 Define a new export

Exports with the webEdition Export Module are performed using so-called export profiles. Click *Export > New > Export* or just *New Export* in the Quickstart screen, to create a new export profile.

#### Procedure 1 Performing an export

##### *In the Export Module mainscreen*

- 1 Choose names for your export profile and the export file. Enter them in the corresponding fields in the *Property* view.
- 2 Choose a target location for your export file using the dropdownmenu in the *Export to* area: *Server* or *local Harddisc*.
- 3 Now you decide in the *Selection* area, whether you prefer *automatic* or *manual Selection*. The manual Selection lets you select documents, templates, objects and classes from the webEdition tree-view. Using the *automatic selection* lets you choose by "type".

**Note:** Objects and classes can only be exported if the webEdition DB/Object Module is installed.

- 4 When you feel comfortable with your selections, proceed by clicking on the *Options* tab.  
*The Options view opens*
- 5 Now select your preferred options. Further information about the *Options* view can be found in Section 1.6.2, "The Options view" on page 18.
- 6 Click on the *Save* button  
*The successful saving of your export profile is confirmed*

**Note:** *Your export profile has to be saved before the export can processed.*

- 7 Click on the *Export* button  
*The Details view opens (see Figure 8)*
- 8 According to your selections made in 2, the generated export XML-file will be saved by the filename you choose either on the server, or you will be prompted to define a target location on your local harddisc.
- 9 The Export thus has finished successfully.

## 2.2 Exportgroups

Exportgroups are used to organize recurring export tasks; the parallel development for multiple webEdition websites from one developer license can be made much easier by using this feature.

### Procedure 2 Create Exportgroup

#### *In the Export Module window*

- 1 Select *Export > New > Group* from the *Export* Dropdownmenu or *New Group* from the Quickstart

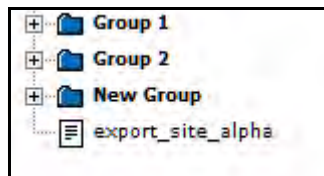
*The Exportgroup window opens*

- 2 Enter a name for the new exportgroup; you might e.g. name the groups after the websites in development.

- 3 Click the *Save* button

*The system acknowledges the success. The new group is now displayed in the explorer menu (see Figure 9)*

**Figure 9** New group in the explorermenu



- 4 The new exportgroup has been successfully created. You can now assign export profiles to this group. The procedure is finished.



---

# Index

---

## A

Audience 11  
audience profile 11

## E

export default templates 19  
Export Module  
    Explorermenu 16  
    installation 15  
    Saving location 18  
Exportgroups 24  
Exportproperties 18

## R

reference documentation 11

## T

Typographical conventions 12

## W

we:tags  
    attribute values 13  
webEdition  
    documentation suite 11  
    on-line documentation 11  
    we:tags 13





# Export Module

## User Guide

Standard 4.1.1  
October 2006  
Printed in Germany

© 2006 webEdition Software GmbH  
All rights reserved.

