



webEdition
manage your content

Editor Plugin



The Editor Plug-in

User Guide

Standard 4.1.1
October 2006

© 2006 living-e AG
All rights reserved.

Printed in Germany

living-e AG does not extend any guarantee or warranty concerning the accuracy and correctness of any information contained in this manual. This manual may not be reproduced by any means, either electronically or mechanically, photocopied, recorded, reproduced or transferred by information storage or information retrieval systems by the purchaser, for purposes other than private use without the express written consent by living-e AG. The purchaser is authorized to make one backup copy of the software. A copy of this software can be requested from living-e AG at any time or it can be downloaded at www.living-e.de. Neither living-e AG nor suppliers of living-e AG shall be held liable for any damage (this shall include, without restriction, any damage arising from lost profits, operation breakdowns, loss of business information or data or any other financial losses), which arise from the use of this product or from the inability to use this product, even in the event that living-e AG has been informed of the possibility of such damage. In any case of damage, liability of living-e AG shall be limited to the amount you have actually paid for the product.

Microsoft Windows and Explorer are trademarks of Microsoft Corporation. Macintosh and Apple are trademarks of Apple Computer Inc. UNIX is a trademark of UNIX System Laboratories. All other trademarks are the property of their respective owners.

Contents

About this document 11

1 Editor PlugIn: Introduction 15

- What is the webEdition Editor Plug-in Module? 15
 - Requirements, installation and licensing 15
 - User preferences for the Editor Plug-in 17
 - Setting a default editing program 18
-

2 How to use the Editor Plug-in 21

- Starting the Editor Plug-in 21
 - Using an HTML editor 22
-

Index 23

List of figures

- Figure 1 Initial registration window 16
- Figure 2 Successful registration of the Editor Plug-in 16
- Figure 3 Choosing a supported editing application 17
- Figure 4 The Options menu 17
- Figure 5 Editor preferences view 18
- Figure 6 The Start editor and Ask for editor options 19
- Figure 7 The Start editor button 21
- Figure 8 Using a third-party HTML editor 22

List of procedures

About this document

Purpose of this document

This document treats the webEdition Editor PlugIn and how to use it.

You can use this manual to learn:

- what the Editor PlugIn is
- how to register the module
- how to use the PlugIn to create webEdition pages and templates using an HTML editing program of your choice

Audience

This document is intended for personnel in the following groups:

- Web administrators
- Web editors

The webEdition customer documentation suite

The documentation team publishes new webEdition documents to support the release of all webEdition features, modules and enhancements.

You can consult our documentation suite for detailed information about the modules you have purchased or about webEdition products that you may wish to purchase in the future. All customer documentation is available in portable document format (PDF) on the webEdition documentation Web page.

On-line reference documentation

The webEdition customer documentation suite comprises the following books, all of which you can obtain at URL: <http://www.living-e.de>

Standard webEdition documentation

The following books support the webEdition Standard suite:

- *The webEdition User Guide*
- *The webEdition Installation Guide*
- *The webEdition Tag Reference*

Documentation for webEdition modules

The following books support the webEdition modules:

- *The Customer Management and Customer Management PRO Module User Guide*
- *The Database/Object Module User Guide*
- *The Editor-PlugIn User Guide*
- *The Newsletter Module User Guide*
- *The Scheduler and Scheduler PRO Module User Guide*
- *The Shop Module User Guide*
- *The Task Messaging Module User Guide*
- *The User Management and User Management PRO Module User Guide*
- *The Workflow Module User Guide*

What precautionary messages mean

webEdition documents include attention and caution messages, which are designed to draw your attention to important instructions.

Attention boxes


An attention box identifies information that is necessary for the proper performance of a specified task. For example:

ATTENTION

You must have the appropriate permissions in your user profile to complete this procedure. Permissions are assigned to you by your webEdition system administrator. Contact your webEdition system administrator for further details.

Caution boxes

Caution messages indicate that there are possible risks to your software or database if you perform a specified task without taking the suggested appropriate precautions. For example:



CAUTION
Database warning

If you complete this procedure, your database will be overwritten.

How commands, system responses and we:tags are represented

The commands, system responses and webEdition tags (called we:tags) used in this document conform to the following conventions.

Web interface commands

Commands performed through a Web browser are shown in *italic* typeface. For example:

Click on the *Save* button.

Menu-based commands performed in a Web browser are shown in *italic* typeface. Drop-down or nested menu commands are separated by an input prompt (>). For example:

Select *Customers > New* from the main menu of the Customer Management Module.

webEdition tags and template code

The webEdition templates use a specialized set of programming tags based on the PHP programming language. These webEdition tags or we:tags are displayed in *courier* typeface and in angled brackets:

Opening tags appear thus: `<we:tag/>`

Closing tags appear thus: `</we:tag>`

The programming code used in webEdition templates is also represented in this document by *courier* typeface:

```
<we:sessionStart/>
<we:ifRegisteredUser>
Hello: <we:sessionField Last name="user name" type="print"/><br>
Logged in
</we:ifRegisteredUser>
```

Attribute variables

Attributes and variables appear in *courier italic* typeface. For example:

```
<we:hidden name="attribute1">
```

How to check the document version and issue

The information on the title page of this document indicates the version and issue for this publication. The version and issue also appear in the footer on every even-numbered page.

The first two digits in the document numbering scheme indicate the version. The version number increases each time the document is updated to support a new software release. For example, the first release of a document is 01.01. In the next software release cycle, the first release of the same document is 02.01.

The second two digits in the document numbering scheme indicate the issue. The issue number increases each time the document is revised and re-released in the same software release cycle. For example, the second release of a document in the same software release cycle is 01.02.

Customer service

For further information about webEdition, please consult our Web page, or contact our customer service department:

- Web Page: <http://www.webedition.biz/>
- E-mail:
 - Technical support: technik@living-e.de
 - Sales: sales@living-e.de
 - Information/Help: info@living-e.de

1 Editor PlugIn: Introduction

This introduction is intended to help you familiarize yourself with the webEdition Editor Plug-in Module. This chapter treats what the module does and how to install it. You can also find information here about the basic layout and command features for the Editor Plug-in Module. These topics are treated in the following sections:

- Section 1.1, "What is the webEdition Editor Plug-in Module?" on page 15.
- Section 1.2, "Requirements, installation and licensing" on page 15.
- Section 1.3, "User preferences for the Editor Plug-in" on page 17.

1.1 What is the webEdition Editor Plug-in Module?

The Editor Plug-in enables you to create webEdition pages and templates using an HTML editing program of your choice. You can choose either to create your webEdition documents entirely in webEdition or to use another HTML editor. The entries/changes you make in your HTML editor will be automatically implemented by webEdition, eliminating the need to copy and paste them using the clipboard.

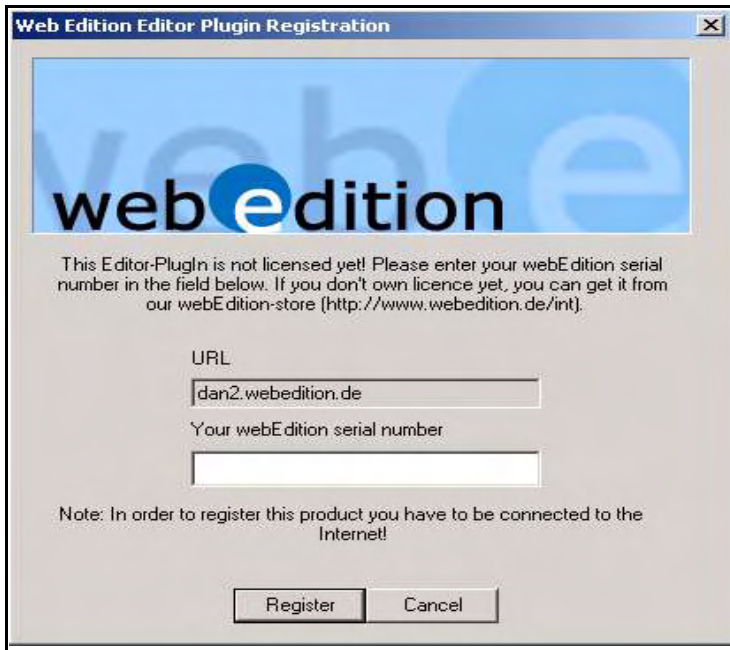
1.2 Requirements, installation and licensing

You must meet or exceed the following requirements to use the Editor Plug-in:

- PC with Microsoft Windows 95 or higher
- webEdition, version 2.0 or higher
- Microsoft Internet Explorer 4.x or higher
- Internet access during the installation

After purchasing a licence for the Editor Plug-in from the webEdition on-line shop, you must register your version online the first time it is run on your computer (see Figure 1, "Initial registration window" on page 16).

Figure 1 Initial registration window



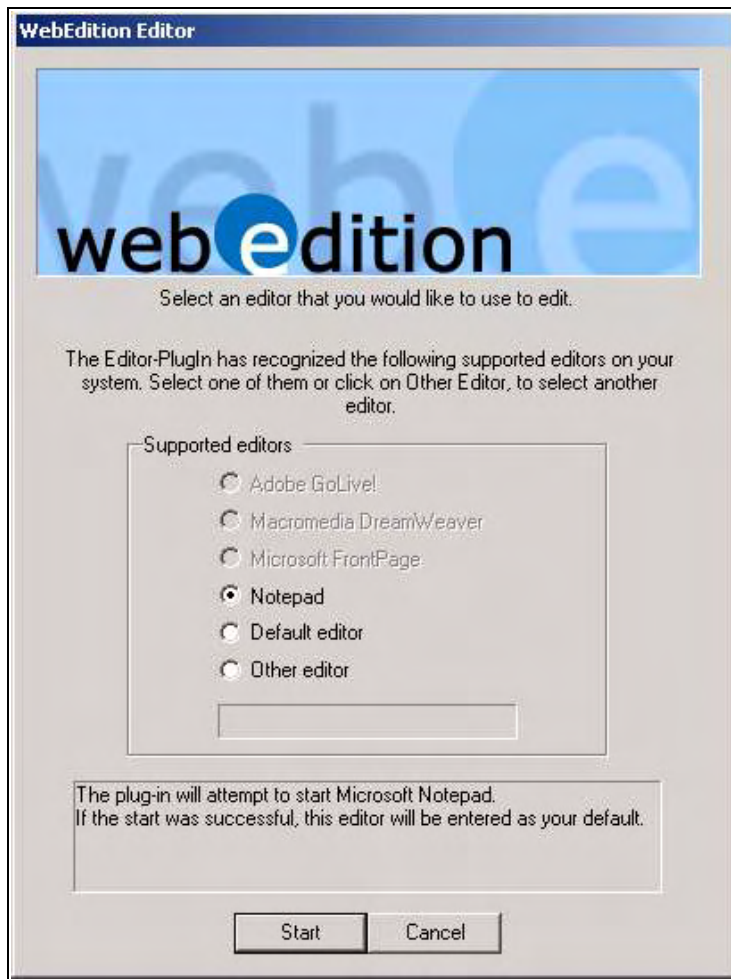
Note: You do not have to download the Editor Plug-in separately. The first time you use webEdition, it will automatically download the Plug-in from our server.

Once you have registered and you have received confirmation that the registration was successful (see Figure 2), the Editor Plug-in will be available for your browser.

Figure 2 Successful registration of the Editor Plug-in

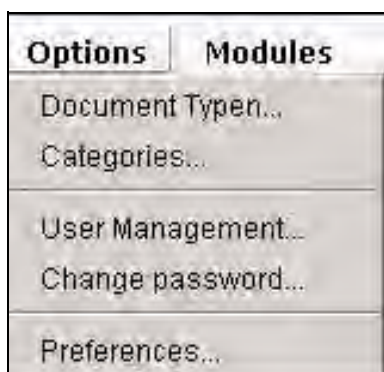


The first time you access the Editor Plug-in, you will be asked to choose your preferred editing application (see Figure 3).

Figure 3 Choosing a supported editing application

1.3 User preferences for the Editor Plug-in

After registering the Editor Plug-in, you can adjust the user preferences to change the behavior of the module. Go to the *Options* drop-down menu in the webEdition main page and select *Preferences...* (see Figure 4).

**Figure 4** The *Options* menu

The system opens the *Preferences* screen. Click the *Editor* tab on the *Preferences* screen to access the *Editor* view (see Figure 5):



Figure 5 Editor preferences view

There are three options you can use to modify the behavior of the Editor Plug-in. The following checkboxes appear in the *Editor* view:

- *Use it.* Activate this option if you wish to use the Plug-in. The Plug-in must be registered before it can be used.

- *Start automatically.* Activate this option if you generally use your HTML editor rather than webEdition to edit your templates. If you have already specified your preferred HTML editing program, it will be launched automatically whenever you wish to edit any templates.

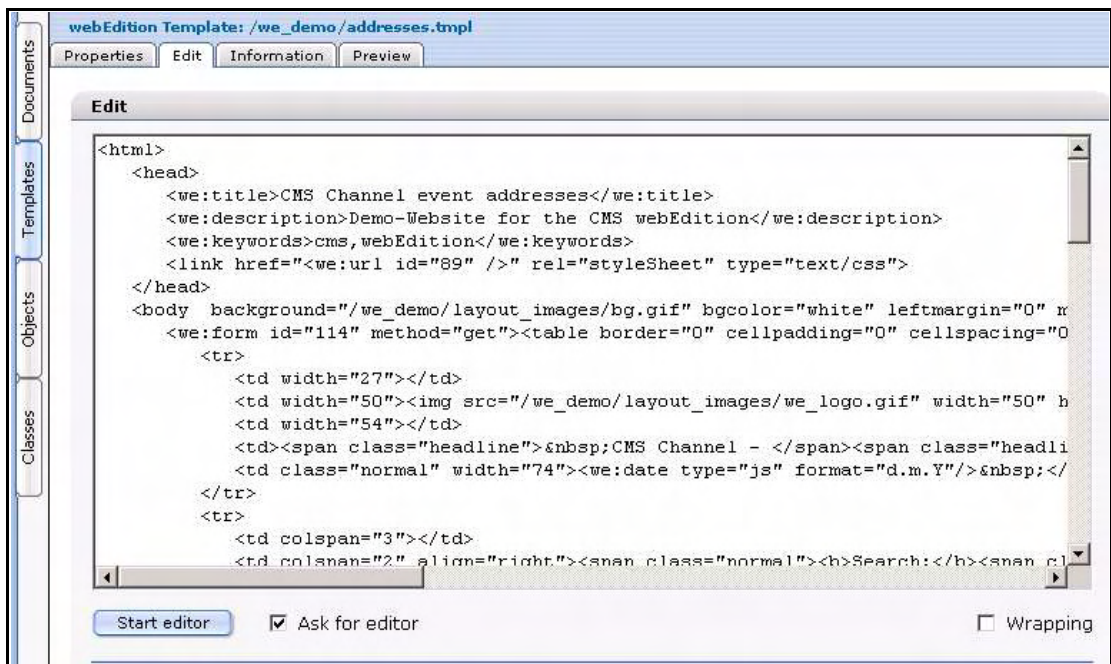
- *Ask on startup which editor should be used.* Activate this option if you use more than one HTML editing program and wish to switch between editors. Activating this option will open a dialog box whenever you start the editing program, asking you which HTML editor you wish to work with. If this option is not activated, webEdition will always start the editing program you last selected.

Note: If you are not using Internet Explorer 4.x or higher (see Section 1.2, "Requirements, installation and licensing" on page 15), the Editor Plug-in options will appear greyed-out. You will also see the following message: *These settings cannot be changed. The Editor PlugIn operates only with the Windows version of Internet Explorer.*

1.3.1 Setting a default editing program

To set a default editing program, select the option *Ask on startup which editor should be used* and select your preferred editing program.

You can also re-set your default editor by selecting the *ask for editor* checkbox that appears next to the *Start editor* button directly under the text editing area of the *Templates > Edit* view (see Figure 6).

Figure 6 The *Start editor* and *Ask for editor* options

Once you have re-set your default editor, when you click the *Start editor* button in the *Templates > Edit* view, the last editing program that you selected will automatically start. (You must, however, make sure that the *Ask on startup which editor should be used* checkbox is not activated). For further details, see Chapter 2, "How to use the Editor Plug-in" on page 21.

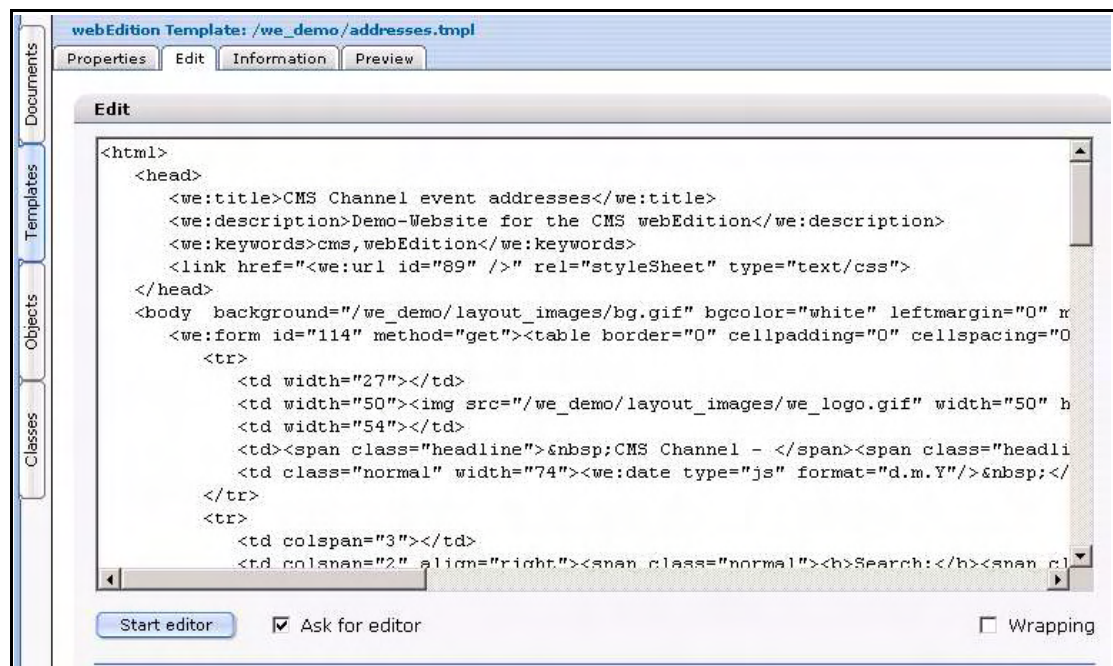
2 How to use the Editor Plug-in

You can either create your webEdition documents entirely in webEdition or you can use the Editor Plug-in to access another HTML editing program of your choice.

2.1 Starting the Editor Plug-in

Depending on the preferences you have selected, your default HTML editing program can be started manually or automatically. You can also select a preferred editing program. (see Section 1.3.1, "Setting a default editing program" on page 18). Whenever you edit templates (*File > New > Template*, then click the *Edit* tab), you will see the *start editor* button under the code entry window (see Figure 7).

Figure 7 The Start editor button



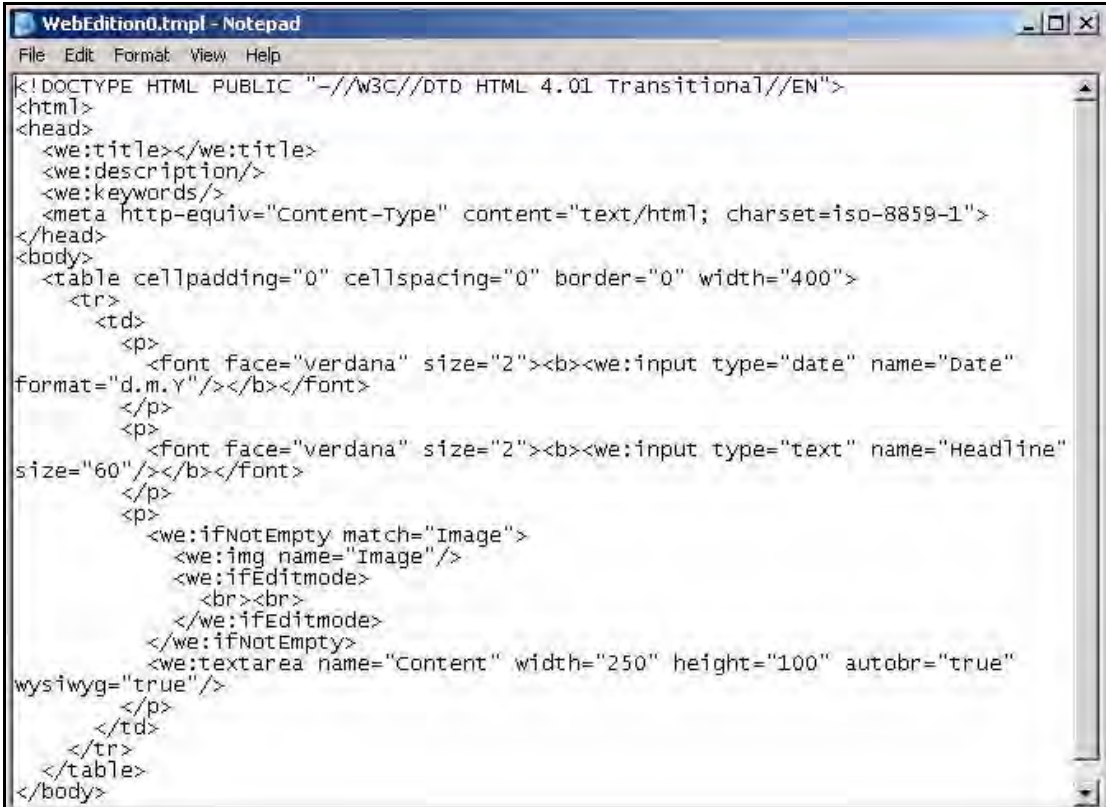
There is also an *Ask for editor* checkbox that allows you to specify your preferred editing program. This box will have a check mark if you have already selected the *Ask on startup which editor is to be used* option in the *Options > Preference > Editors* view. If you have not activated the *Ask on startup...* check box, the editing program selected during the installation will start.

2.2 Using an HTML editor

Your preferred HTML editor operates seamlessly with webEdition. After activating the Editor Plug-in and choosing an editor, whenever you open a webEdition template, any webEdition code already contained in the entry window will appear automatically in your editing program entry window.

In the following example (see Figure 8), the Microsoft Notepad application has been selected as the default editor.

Figure 8 Using a third-party HTML editor



```

WebEdition0.tmpl - Notepad
File Edit Format View Help
<!DOCTYPE HTML PUBLIC "-//W3C//DTD HTML 4.01 Transitional//EN">
<html>
<head>
  <we:title></we:title>
  <we:description/>
  <we:keywords/>
  <meta http-equiv="Content-Type" content="text/html; charset=iso-8859-1">
</head>
<body>
<table cellpadding="0" cellspacing="0" border="0" width="400">
  <tr>
    <td>
      <p>
        <font face="verdana" size="2"><b><we:input type="date" name="Date"
format="d.m.Y"/></b></font>
      </p>
      <p>
        <font face="verdana" size="2"><b><we:input type="text" name="Headline"
size="60"/></b></font>
      </p>
      <p>
        <we:ifNotEmpty match="Image">
          <we:img name="Image"/>
          <we:ifEditMode>
            <br><br>
          </we:ifEditMode>
        </we:ifNotEmpty>
        <we:textarea name="Content" width="250" height="100" autobr="true"
wysiwyg="true"/>
      </p>
    </td>
  </tr>
</table>
</body>

```

You can then use your editing program in the usual manner (see your vendor documentation for details). Whenever you save any entries or changes in your editing program, those changes are automatically imported to the *Edit* window in webEdition.

Index

A

Audience 11
audience profile 11

C

Customer service 14

E

editing program
 choosing a program 18
 choosing an editing program 16
 default program
 changing 18
 setting 18
 using
 saving your data in webEdition 22
 seamless operation with webEdition 22
 using a third-party HTML editor 22
Editor Plug-in
 about 15
 automatically downloaded 16
 registering 15
 system requirements for 15
 user preferences 17, 18

H

HTML editor. See editing program

P

Precautionary messages
 about 12
 Attention boxes 12
 Caution boxes 12
preferences
 accessing for Editor Plug-in 17
 at startup 18, 21
 start automatically 18
 use Editor Plug-in 18
purchasing the Editor Plug-in 15

R

reference documentation 11
registration
 confirmation of 16
 initial 15
 prerequisites 15
 purchasing prior to 15

T

Typographical conventions 12

W

we:tags
 attribute values 13
webEdition
 documentation suite 11
 on-line documentation 11
 we:tags 13
webEdition documentation
 Customer documentation suite 11
 on the World Wide Web 11
 version and issue 13

Editor Plug-in

User Guide

Standard 4.1.1
October 2006
Printed in Germany

© 2006 webEdition Software GmbH
All rights reserved.

